



water affairs

Department:
Water Affairs
REPUBLIC OF SOUTH AFRICA

Project (WP10587): Continuation of the Northern Planning Region All Town Reconciliation Strategies (NP-RATS)

**North West Province:
STRATEGIES STEERING COMMITTEE (SSC) MEETING No. 01 MINUTES**

Held at Bona Bona Game Lodge, Farm Klipfontein, on the N12 between Klerksdorp and Wolmaransstad, on 24 April, 2013 at 09h30.

1. WELCOME AND INTRODUCTION OF MEMBERS

- 1.1 Mr Johan van Rooyen, Department of Water Affairs, National Water Resource Planning (NWRP), welcomed all to the meeting. Mr Tendani Nditwani continued with proceedings as per the agenda.
- 1.2 Mr Nditwani asked members to introduce themselves, indicating the organisation they represent and their interest in this workshop.

2. ATTENDANCE AND APOLOGIES

- 2.1 The attendance and apologies were noted. The attendance register is attached as **Appendix A**. It was noted that the attendees at this Strategies Steering Committee (SSC) workshop for the North West Province was reasonably represented both geographically and by relevant stakeholders.

3. ACCEPTANCE OF AGENDA

- 3.1 The agenda was approved by all present.
- 3.2 Proceedings for today's workshop are captured in the presentation, attached as **Appendix B**.

4. PURPOSE OF THE WORKSHOP

- 4.1 The purpose of today's workshop is to introduce the study to stakeholders, establish the role of the SSC, facilitate cooperation and interaction between all, outline the findings of the Inception Phase, outline the scope of work and obtain comments and input for the prioritisation of strategies – to be updated during this phase.

5. MINUTES OF THE PREVIOUS MEETING

There are no previous minutes as this was the first SSC workshop held in the North West Province

in this current Phase.

6. ROLE OF THE STRATEGIES STEERING COMMITTEE (SSC)

- 6.1 The SSC to provide executive guidance on the direction and outcomes of the study; establish lines of communication for information sharing; promote linkages to existing regional planning activities and ensure the incorporation of strategies' recommendations in formal planning processes (IDPs, WSDPs, etc.).

7. INTRODUCTION OF THE STUDY

- 7.1 Mr Tendani presented the background of water resources planning studies that included the development of the first National Water Resource Strategy in 2004 and the Reconciliation Strategies for large water supply systems of economic importance. The All Towns studies were commissioned in 2008 (until 2011) for all water supply systems in South Africa – a complex and enormous assignment.
- 7.2 There were 94 rudimentary strategies prepared in the North West Province for all cluster areas based on the water resource for a cluster and consumers supplied from this resource. Of these, 24 towns' water balance was reported at the time as being in deficit (water requirements exceed available resources). Due to budget constraints, not all of these strategies can be reviewed and updated during this phase (2012 – 2015).
- 7.3 Key messages from the first All Towns studies illustrated that improved management will solve a large portion of immediate problems; minimal metering takes place – resulting in more estimates that have to be made to reconcile water requirements with water resources; groundwater is a viable option in many instances and water resource availability is less of a constraint than the appropriate management (including WC/WDM) and operation of infrastructure.
- 7.4 The North West Province is divided into two DWA planning regions, namely North and Central due to the DWA water catchment management area boundaries. The Northern Planning Region in the province includes the the western and central portion of the Crocodile (West) and Marico Water Management Area (WMA). The Central Planning Region in the province includes the norther parts of the Upper and Middle Vaal WMA as well as the northern and easter part of the Lower Vaal WMA. Stakeholders were made aware of the division and provided maps to clarify their demarcated planning region, for future reference and contact with appropriate officials. Stakeholders' attention was drawn to the hand-out packs, which included the agenda, presentation and a Background Information Document (BID) of the study. The BIDs for the Central and Northern Planning Regions respectively are included under **Appendix C**.
- 7.5 The current appointment (2012 till 2015) for the continuation of the All Towns studies is based on an on-going process to review and update the existing, prioritised strategies to ensure that they stay relevant and sustainable. It will also ensure that they remain applicable for inclusion in national, provincial, local and regional planning activities.
- 7.6 Mr Nditwani explained the contents of a reconciliation strategy and referred to the study website where stakeholders can access the existing strategies by clicking on the All Town

Strategies – Strategy Portal: <http://www.dwa.gov.za/projects.aspx> .

- 7.7 The current appointment will reconcile the water requirements with available water resources, up to the 2035 planning horizon.

8. OVERVIEW OF STUDY ACTIVITIES

- 8.1 This phase includes several stages, some running concurrently. The first is the Inception stage – nearing completion – that includes the reconnaissance review of existing strategies, preliminary prioritisation, the first SSC workshops (one per province) and the development of District Municipality Summary Reports. The latter (based on the existing strategies, summarised per District and then per Local Municipality and its strategies), are available in a navigable MS Excel format, from the DWA Regional Office – Water Sector Support.
- 8.2 The remainder of this phase would focus on the detail review and update of the prioritised strategies. Upon completion, the updated strategies will again be made available via the DWA website and the District Municipality Summary Reports will also be updated.
- 8.3 One of the activities for the SSC during today's workshop is to refine the preliminary priority selection, based on the current situation, for the continuation of this study. (During the Break-Away Sessions).
- 8.4 The preliminary prioritisation (key focus on water resource availability and quality to meet current and future requirements) was based on the following criteria:
- Step 1: Towns that are currently in deficit (based on the water balance);
 - Step 2: remove towns where projects (predominantly RBIG) are at an advanced stage of implementation, which would address the situation (deficit);
 - Step 3: add the towns where RBIG projects and the like can still be influenced by the strategies' recommendations;
 - Step 4: add towns identified as hot spot areas on a national, provincial or local strategic level.
- 8.5 This phase aims to improve the level of confidence of the strategies, based on the best available information, so that the strategies can be used in other planning activities.
- 8.6 Stakeholders will be consulted and can provide input during the course of this study, being at specific meetings or regional workshops such as the SSC. The next SSC is scheduled to take place during October 2014, unless otherwise planned.

All (10/2014)

9. BREAK-AWAY SESSIONS

- 9.1 Break-away sessions were arranged per District Municipality (DM including the Local Municipalities (LM) and other stakeholders as geographically applicable). DWA National and Regional Office representatives rotated between the sessions. The purpose of the break-away sessions was to confirm priority strategies and to solicit information from SSC members for inclusion in the strategies. The Inception Report will address the newly prioritised (based on today's session) strategies for the continuation of this study.
- 9.2 **Bojanala Platinum DM (BPDM) – Northern Planning Region**

PSP
(30/04/2013)

9.2.1 The only Water Services Authority (WSA) present was Kgetlengrivier LM. DWA National and Regional Office as well as the BPDM officials present, provided their input.

9.2.2 Of the 17 preliminary priorities, two (2) remain as priority due to water resource availability issues. Further to this there are an additional 13 strategies (maybe) to be updated and reviewed due to strategic importance or water resource quality problems.

9.3 Ngaka Modiri Molema DM (NMMDM) – split by the DWA Central and Northern Planning Regions

9.3.1 The NMMDM was present (it being the WSA), along with Mafikeng LM, Ramotshere Moiloa LM and Ditsobotla LM.

9.3.2 Of the three (3) (two in the Northern Planning Region, one in the Central Planning Region) preliminary priorities, six (6) remain (initial two and two additional in the Northern Planning Region and initial one and one additional in the Central Planning Region) as priority due to water resource issues. Further to this, there is one (1) additional strategy (maybe) to be updated and reviewed due to strategic importance or water resource quality problems.

9.4 Dr Ruth Segomotsi Mompati DM (DrRSMDM) – Central Planning Region

9.4.1 The DrRSMDM was present (it being the WSA), along with Mamusa LM, Greater Taung LM, Naledi LM and Kagisano-Molopo LM.

9.4.2 Of the two (2) preliminary priorities, three (3) (initial two and one additional) remain as priority due to water resource availability issues. Further to this, there are an additional 10 strategies (maybe) to be updated and reviewed in the Kagisano-Molopo LM due to groundwater yield and water resource quality issues.

9.5 Dr Kenneth Kaunda DM (DrKKDM) – Central Planning Region

9.5.1 All WSAs were present – Tlokwe, City of Matlosana, Ventersdorp and Maquassi Hills LM's. DWA National and Regional Office as well as the DrKKDM officials present, provided their input.

9.5.2 There were no preliminary priorities identified within the DrKKDM. Upon review and based on the current situation, one (1) strategy was identified as priority due to water resource availability issues. No further strategies were identified for review (maybe) due to strategic importance or water resource quality problems.

9.6 In summary, the priority strategies for the North West Province can be reported, per DWA Planning Region as follows:

9.6.1 Central Planning Region

- Priority = yes: 6 strategies; and
- Priority = maybe: 10 strategies (all in the Kagisano-Molopo LM).

9.6.2 Northern Planning Region

<p>➤ Priority = yes: 6 strategies; and ➤ Priority = maybe: 14 strategies.</p>	
<p>9.7 Strategies allocated a priority of “maybe” include areas where water resource quality problems or institutional challenges are experienced as well as where potential new information is available that may influence the recommendations of a particular strategy. A list of the new priority strategies is attached in Appendix D.</p>	
<p>9.8 The DWA NW Regional Office is assisting a number of municipalities in the province with the development and implementation of WC/WDM programmes. This will be considered during the update and review of prioritised strategies.</p>	<p>DWA NW, PSP (03/2014)</p>
<p>9.9 In the BPDM, one of the most pressing items is the institutional arrangements between DWA (National, Regional Office), the Water Boards (Magalies Water, Rand Water) and the WSAs (all five Local Municipalities), for the further planning and development of regional bulk infrastructure – water resources are available.</p>	<p>DWA National, NW (06/2013)</p>
<p>9.10 The PSP to obtain the business plans of Water Boards on current and future water services provision to ensure water source options are taken into account in the individual strategies.</p>	<p>PSP (08/2013)</p>
<p>9.11 Water resource quality – especially groundwater – has been identified as an area requiring more attention in terms of use and sustainable management. Very few WSAs have groundwater monitoring programmes in place.</p>	<p>DWA, WSAs (02/2014)</p>
<p>9.12 Available metering information on water supplied and consumed still pose a challenge. For the purpose of this study, information on bulk metering (not individual connections – that will be sourced from the Financial Offices) is important.</p>	<p>WSAs (02/2014)</p>
<p>9.13 Management and operation of existing water supply infrastructure require more resources (human and financial). It includes the formalisation of informal connections. This will improve the reconciliation of water requirements with water resources, the latter of which are generally available.</p>	<p>WSAs (10/2014)</p>
<p>9.14 Seasonal availability of water resources in some areas (Derby, Rustenburg, etc.) may require interim measures to ensure water requirements are met.</p>	<p>WSAs, DWA NW (06/2013)</p>
<p>9.15 The PSP to consider migration patterns: sample of Koster and Swartruggens expanding due to more affordable properties in these areas, compared to the more expensive Rustenburg area – the latter being the employment node.</p>	<p>PSP (on- going)</p>
<p>9.16 The population figures reported in the DrKKDM should be reviewed as it may affect the water requirements and ultimately the water balance.</p>	<p>PSP (on- going)</p>
<p>9.17 A general comment was made about the current recorded water use licensing for domestic versus irrigation water requirements. To be verified during the study as the potential exists to transfer water rights from one consumer type to the other, if required.</p>	<p>PSP (on- going)</p>
<p>10. WAY FORWARD AND STUDY PROGRAMME</p>	
<p>10.1 Ms M Esterhuizen provided an overview of the way forward and study programme. Inception</p>	<p>PSP (30/04/2013)</p>

is nearly complete (April 2013) and the resultant Inception Report will be made available.

10.2	Stakeholders will be consulted and can provide input during the course of this study. The next SSC is scheduled to take place during October 2014.	SSC (on-going, 10/2014)
10.3	The focus of the remainder of the study period is on the review and update of prioritised strategies in order to re-visit the water requirements, water services infrastructure and other building blocks of strategies and reconcile it with the water requirements. The water balance will be updated and appropriate recommendations made for consideration by planning authorities. A status quo report on the study progress and findings will be prepared before the second SSC.	PSP (on-going)
10.4	Updated and approved strategies will be made available to stakeholders via the DWA study website on a bi-monthly or quarterly base.	PSP, DWA (on-going)
10.5	The District Municipality Summary Reports will be updated and made available to stakeholders via the DWA study website.	DWA, PSP (08/2015)
10.6	Study closure for this appointment is October 2015.	DWA, PSP (30/10/2015)
11.	GENERAL	
11.1	No items were raised under General.	
12.	DATE OF NEXT MEETING AND CLOSURE	
12.1	NEXT MEETING	
12.1.1	The next SSC meeting will be held during October 2014. The day and venue to be confirmed. Mr Nditwani conferred with stakeholders on the proposed date (month, year) for the next SSC and invited comments. No comments were received but stakeholders are welcome to contact the study team in this regard, should any concerns arise.	All (10/2014)
12.1.2	Ms Ristic indicated the DWA and PSPs are available to link to existing planning activities such as the District Municipality Forums on water services and may present the status of this study at these forums if required.	DWA, PSP (on-going)
12.2	CLOSURE	
	Mr Nditwani thanked all members for their attendance and participation and adjourned the meeting at 13:25.	

Meeting notes compiled by Ms M Esterhuizen of UWP Consulting

APPENDIX A ATTENDANCE REGISTER



*Ylora v. Schalkwyk. ATT Reg Copy To
Attache - Registre.
Dr KK DM*

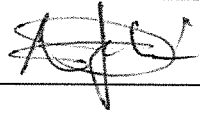
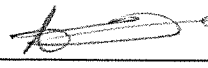
DEPARTMENT: WATER AFFAIRS
Directorate: National Water Resource Planning

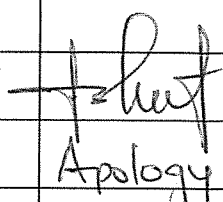
North West Province Strategies Steering Committee (SSC)
Workshop – SSC01

Date and Time: Wednesday, 24 April 2013 at 9:30 am.
Venue: Bona Bona Game Lodge, Farm Klipfontein, on the N12 between Klerksdorp and Wolmaransstad

Attendance Register

Organisation	Name	Surname	Email	Fax	Tel	Signature
Botshelo Water	Eddie	Van der Heiden	eddievd@nwpg.gov.za	018 384 1961	018 384 2951/3	
COGTA: NW	Assigned Representative		-			
Department Housing and Human Settlement	K	Mpobole	kmpobole@nwpg.gov.za / omongale@nwpg.gov.za		018-391-0411	
Department Human Settlement	Mangie	Rakale	mangie.rakale@dhs.gov.za		018-387-9500	
Department of Mineral Resources	Pieter	Swart	Pieter.Swart@dmr.gov.za / lpeleng.Wesi@dmr.gov.za	018-462-9039	018-487-9830	
Department of Water Affairs	Johan	van Rooyen	VanRooyenJA@dw.gov.za	012-336-8295	012-336-8814	
Department of Water Affairs	Ockie	van den Berg	VanDenBergO@dw.gov.za	012-336-7399	012-336-8613	
Department of Water Affairs	Witek	Jezewski	jezewski@dwa.gov.za	012-336-8295	012-336-8160	
Department of Water Affairs	Ishmael	Khumoen g	khumoenqi@dwa.gov.za		018-387-9500	
Department of Water Affairs	Paul	Van der Merwe	VanDerMerwep@dwa.gov.za		018 - 3879500	
Department of Water Affairs	Jurgo	van Wyk		012-336-6731	012-336-8407	
Department of Water Affairs	Rens	Botha	bothar@dwa.gov.za	012 392 1408	012-392-1308	<i>RS</i>
Department of Water Affairs	Neo	Thulo	ThuloN@dwa.gov.za		018-387-9500	

Department of Water Affairs	Tendani	Nditwani	NditwaniT@dwaf.gov.za	012-336-8295	012 336-8189	
Department of Water Affairs	Seef	Rademeyer	seef@dwa.gov.za		012-336-8358	
Department of Water Affairs	Dragana	Ristic	risticd@dwa.gov.za		012-336-8302	
Dept. of Agriculture, Forestry & Fisheries (DAFF)	Mary-Jean	Gabriel	dwuid@daff.gov.za			
Dept. Of Local Government	Lucky	Fourie	lfourie@nwpg.gov.za			
Development Bank of South Africa	Patrick	Ntsime	PatrickN@dbsa.org.za	(011) 206 3525	(011) 313 3525	
Magalies Water	Roelf	le Roux	roelfl@magalieswater.co.za / reeneh@magalieswater.co.za		014-597 4636	
MISA NW	Pinky	Seabelo	pinky.seabelo@misa.gov.za			
Muondli Consulting and Projects CC	Albert	Jeleni	albertj@muondli.co.za	Tel: +27 (0)12 549-5126	Fax: +27 (0)86 648-0183	
Planning Commission	Radinaledi	Mosiane	rmosiane@nwpg.gov.za / radinaledimosiane@yahoo.com		(018) 388 3470	
Water Research Commission	Wandile	Nomqophu	wandilen@wrc.org.za	012-331-2565	012-330-9069	
Western Limb Producers Forum	Bernard	Meyer	bernard.meyer@angloamerican.com	+27 (0) 86 760 4167	+27 (0) 11 373 6651	
NW Office of the Premier	Danie	Schoeman	dschman@nwpg.gov.za	018-387-5441	018-387-4007	Apology
WRP	Colin	Talanda	colint@wrp.co.za		012-346-3496	
WRP	Pieter	van Rooyen	PieterV@wrp.co.za		012-346-3496	
Bojanala Platinum DM	Sydwell	Maluleke	Sydwellm@bojanala.gov.za	014-597-3187	014-590-4603	Apology
	Amos	Khumalo	AmosK@bojanala.gov.za	014-590-4600	014-597-3187	
			-			
Moretele LM WSA	Phuti	Mabotja	phutimabotja@ymail.com	012-716-9999	012-716-1034	
	Frans	Mabokela	mabokela.ft@mweb.com		012-716-1000	
			-			
Madibeng LM WSA	Lerato	Sebidi	Leratosebidi@madibeng.gov.za	012-318-9302		
	Bathabile	Moabi	batabilemoabi@madibeng.gov.za	012-318-9302	012-318-9230	

	Michael	Lelaka	<a href="mailto:michaellelaka@ma
dibeng.gov.za">michaellelaka@ma dibeng.gov.za	012-318-9654	012-318-9380	
			-			
Rustenburg LM WSA	Mike	Mokgwamme	<a href="mailto:lebon@rustenburg.g
ov.za">lebon@rustenburg.g ov.za	014-590-3388	014-590-3380	
	Ziyanda	Mateta	<a href="mailto:zmateta@rustenbur
g.gov.za">zmateta@rustenbur g.gov.za		014-590-3530	
			-			
Kgetlengrivier LM WSA	Tertius	Chiloane	<a href="mailto:tlogelang.tc@voda
mail.co.za">tlogelang.tc@voda mail.co.za	086-525-2546	014-543-2615	 Apology.
	Ben	Mothogane	<a href="mailto:mothoganeb@ka
etlengrivier.gov.za">mothoganeb@ka etlengrivier.gov.za			
			-			
Moses Kotane LM WSA	Tikologo	Makhoana	<a href="mailto:tikologo@moseskot
ane.gov.za">tikologo@moseskot ane.gov.za	014-555-6368	014-558-3489	
			-			
Ngaka Modiri Molema DM WSA	Pholo	Nhutang	<a href="mailto:nhutangp@gmail.c
om">nhutangp@gmail.c om	018-381-0561	018-381-0130	
	A	Blaw	<a href="mailto:blawa@nmmdm.go
v.za">blawa@nmmdm.go v.za	018-381-0561	018-381-9438	
			-			
Mafikeng LM	Ranko	Ruiters	<a href="mailto:juanitajansen@mafi
keng.gov.za">juanitajansen@mafi keng.gov.za	018-384-4830	018-389-0380	
	Keaobaka	Kabushong			018-389-0111	
	Aubrey	Dube	<a href="mailto:juanita.vanbiljon@m
afikeng.gov.za">juanita.vanbiljon@m afikeng.gov.za		018-389-0382	
Ditsobotla LM	Leslie	Morubane		018-632-5247	018-632-6955	
	Martin	Clark	<a href="mailto:clarkm@ditsobotla.
co.za">clarkm@ditsobotla. co.za	018-632-5247	018-632-6955	
	D	Lombard	<a href="mailto:lombardd@ditsobot
la.co.za">lombardd@ditsobot la.co.za	018-632-5247	018-632-6955	
	Grace	Malebatja	<a href="mailto:malebatjagrace@g
mail.com">malebatjagrace@g mail.com	018-632-5247	018-632-6955	
	Steve	Molaudi	-			
	Mbaluko Justin	Bhine	<a href="mailto:bhine@ditsobotla.g
ov.za">bhine@ditsobotla.g ov.za / <a href="mailto:moiloag@ditsobotla
.gov.za">moiloag@ditsobotla .gov.za	018-632-5247	018-632-5057	
			-			
Ramotshere Moiloa LM	Crosby	Maema	<a href="mailto:neo.lemme@ramots
here.gov.za">neo.lemme@ramots here.gov.za	018-642-3586	018-642-1081 Ext. 202	

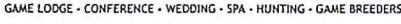
	Oscar	Ramapho kela	oscar.ramaphokela@ramotshere.gov.za		018-642-1081	
	Kabelo	Boikanyo	-		018-642-1081	
	Mohammed	Rasool	mjraffool@gmail.com <i>mjrassool@gmail.com</i>	018-642-2642	018-642-1081	<i>PS</i>
			-			
Dr Ruth Segomotsi Mompoti WSA	Mohammed	Hayat	hayatm@bophirima.co.za	053-927-2401	053-927-1024	
	Molefi	Chwene	chwenem@bophirima.co.za			<i>[Signature]</i>
			-			
Lekwa-Teemane LM	Reinhardt	Oosthuizen	Oosthuizenr@lekwa-teemane.co.za	053-441-2210	053 441 2206	
	Motlaletse mang Andrew	Makuapane	makuapane@lekwa-teemane.co.za	053-441 3735	053 441 2206	
	Brian	Segapo	segapob@lekwa-teemane.co.za			
			-			
Mamusa LM	Simon <i>Imelo</i>	Malengwa <i>Matokonyane</i>	malengwas@mamusalm.co.za	053 963 2474	053 963 1331	<i>Matokonyane</i>
	Maxwell	Mongale	mongalem@mamusalm.co.za	053 963 2474	053-963-1331	<i>[Signature]</i>
	<i>Seun</i>	<i>V.B. WESTHUIZEN</i>	<i>smmotorcycle@waspcq.za</i>	<i>0539632474</i>	<i>0539631331</i>	<i>[Signature]</i>
Greater Taung LM	Ogodiseng	Picoyame	picoyame@taunglm.co.za	086-600-4677	539 949 457	
	M	Dube	dumam@taunglm.co.za	053 994 3917	053-994-9406	
Naledi LM	Gideon Leon	Pretorius	leonpretorius961@gmail.com	053 927 1022	053 928 2207/8	<i>[Signature]</i>
Kagisano & Molopo LM	P	Molele	molelep@kagisanolm.co.za / karabolesabe@yahoo.com	053-998-3711	053 3369	<i>[Signature]</i>
	Kutlwano	Dijwe	dijwek@kagisanolm.co.za	053 988 3286	053 998 3369	
Dr Kenneth Kaunda DM	Simon	Sebolai	munman@kaundadistrict.gov.za	018-473 2938	018-473 8016	

Ventersdorp LM WSA	Ogopoleng Gideon	Moremedi	gideon@ventersdorp.co.za	018-264-2051	0182648531	
	Sasi	Sidu	sasi@ventersdorp.co.za		0182648614	
	Wynand	Marx	wmarx@ventersdorp.co.za			
	Maritjie	Manley	Manley@ventersdorp.co.za			
Tlokwe City Council WSA	Christo	Stoltz	christos@tlokwe.gov.za / joeym@tlokwe.gov.za	018-299-5443	018-299-5403	
	Kleintjie	Kleinhans	kleintjiek@tlokwe.gov.za	018-299-5443	018-299-5403	
City of Matlosana WSA	Itu	Lethale	ilethale@klerksdorp.org	018-462-6154	018-487-8368	
	AG	Strydom	gstrydom@klerksdorp.org	0184623083	0184878010	
	Ronny	Mukondeli	rmukondeleli@klerksdorp.org	018-462-6154	018-487-8023	
	Brenda	de Klerk	bdeklerk@klerksdorp.org	018-462-6154	018-487-8375	
	Hanse	Mohapi	kkeikabile@klerksdorp.org	018-462-6154	018-487-8383	
Maquassi Hills WSA	James	Muller	mullerj@wollies.gov.za	018 596 1295	018-596-1067	
	Nico	Morris	morris.anet@gmail.com			
	TG	Phaedi			018-389-0351	
MAMUSA LOCAL MUN	TUMELO	MATOKONYAME	kimotoksa@yahoo.com	0539631331	0539632474	

NW Stakeholder Attendance Register

Organisation	Title	Name	Surname	Email	Fax	Tel	Cell	Attendance	Signature
Botshelo Water	Mr	Eddie	Van der Heiden	eddievd@nwpg.gov.za	018 384 1961	018 384 2951/3	0823722715	Confirm Tshiamo Moleme	
COGTA: NW		?							
Department Housing and Human Settlement		K	Mpobole	kmpobole@nwpg.gov.za / omonqale@nwpg.gov.za		018-391-0411	082-441-6056		
Department Human Settlement	Ms	Mangie	Rakale	mangie.rakale@dhs.gov.za		018-387-9500			
Department of Mineral Resources	Mr	Pieter	Swart	Pieter.Swart@dmr.gov.za / Ipelenq.Wesi@dmr.gov.za	018-462-9039	018-487-9830			
Department of Water Affairs	Mr	Johan	van Rooyen	VanRooyenJA@dwa.gov.za	012-336-8295	012-336-8814	082-808-5652	Confirmed	
Department of Water Affairs	Mr	Ockie	van den Berg	VanDenBergO@dwa.gov.za	012-336-7399	012-336-8613	082-809-2011	confirmed	
Department of Water Affairs	Mr	Witek	Jezevski	jezewski@dwa.gov.za	012-336-8295	012-336-8160	082-412-4737	Confirmed	
Department of Water Affairs	Mr	Ishmael	Khumoeng	khumoengi@dwa.gov.za		018-387-9500	082-806-8857	Confirmed	
Department of Water Affairs	Mr	Paul	Van der Merwe	VanDerMerwep@dwa.gov.za		018 - 3879500	0823090937	Confirmed	
Department of Water Affairs		Silo	Kheva	mdistram@dwa.gov.za		083-633-2855	083-633-2855	Declined	
Department of Water Affairs	Mr	Jurgo	van Wyk		012-336-6731	012-336-8407	082-809-5420	Confirmed	
Department of Water Affairs	Mr	Rens	Botha	bothar@dwa.gov.za		012-392-1308	082-808-9560	Confirmed	
Department of Water Affairs	Mr	Neo	Thulo	ThuloN@dwa.gov.za		018-387-9500	082-600-8392	Confirmed	
Department of Water Affairs	Mr	Tendani	Nditwani	NditwaniT@dwaf.gov.za	012-336-8295	012-336-8189	082-888-5113	Confirmed	
Department of Water Affairs	Mr	Seef	Rademeyer	seef@dwa.gov.za	rademeytso@dwa.gov.za	012-336-8358	082-809-2338	Confirmed	
Department of Water Affairs	Ms	Dragana	Ristic	risticd@dwa.gov.za		012-336-8302		Confirmed	
Dept. of Agriculture, Forestry & Fisheries (DAFF)	Ms	Mary-Jean	Gabriel	dwuid@daff.gov.za			082-555-8064		
Dept. Of Local Government	Mr	Lucky	Fourie	lfourie@nwpg.gov.za					
Development Bank of South Africa	Dr	Patrick	Ntsime	PatrickN@dbsa.org.za	(011) 206 3525	(011) 313 3525		Confirmed	
Magalies Water	Mr	Roelf	le Roux	roelfi@magalieswater.co.za / reneeh@magalieswater.co.za		014-597 4636	083-289-9214	Confirmed Boitumelo Maledu	
MISA NW	Ms	Pinky	Seabelo	pinky.seabelo@misa.gov.za			082-551-4503		
Muondli Consulting and Projects CC	Mr	Albert	Jeleni	albertj@muondli.co.za	Tel: +27 (0)12 549-5126	Fax: +27 (0)86 648-0183	Cell: 076 773-7460	Confirmed	
Planning Commission		Radinaledi	Mosiane	rmosiane@nwpg.gov.za / radinaledimosiane@yahoo.com		(018) 388 3470	082-269-3647		
SALGA	Ms	Zodwa	Fhwabane	zfhwbane@salga.org.za	(018) 462 4662	(018) 462 5290		Declined	
South African National Biodiversity Institute	Mr	John	Dini	J.Dini@sanbi.org.za	012-843-5165	012-843-5192	083-420-7988	Declined	
Water Research Commission	Mr	Wandile	Nomqophu	wandilen@wrc.org.za	012-331-2565	012-330-9069	083-290-7243		
Western Limb Producers Forum	Mr	Bernard	Meyer	bernard.meyer@angloamerican.com	+27 (0) 86 760 4167	+27 (0) 11 373 6651	+27 (0) 83 445 5605	Confirmed	
NW Office of the Premier	Mr	Danie	Schoeman	dschman@nwpg.gov.za	018-387-5441	018-387-4007		Confirmed	
WRP	Mr	Colin	Talanda	colint@wrp.co.za		012-346-3496	084-555 8044	Confirmed	
WRP	Mr	Pieter	van Rooyen	PieterV@wrp.co.za		012-346-3496	082-321 3446	Confirmed	
Bojanala Platinum DM	Mr	Sydwell	Maluleke	Sydwellm@bojanala.gov.za	014-597-3187	014-590-4603		Apology	
	Mr	Amos	Khumalo	AmosK@bojanala.gov.za	014-590-4600	014-597-3187		Confirmed	
Moretele LM WSA	Ms	Phuti	Mabotja	phutimabotja@ymail.com	012-716-9999	012-716-1034	072-072-1547	Confirmed	
		Frans	Mabokela	mabokela.ft@mweb.com		012-716-1000	078-077-6044	Confirmed	
Madibeng LM WSA	Ms	Lerato	Sebidi	Leratosebidi@madibeng.gov.za	012-318-9302		083-269 4003	Confirmed Ntokozi Mdluli	
		Bathabile	Moabi	batabilemoabi@madibeng.gov.za	012-318-9302	012-318-9230			
	Mr	Michael	Lelaka	michaelllelaka@madibeng.gov.za	012-318-9654	012-318-9380		Confirmed	
Rustenburg LM WSA	Mr	Mike	Mokgwamme	lebon@rustenburg.gov.za	014-590-3388	014-590-3380		Confirmed	
	Ms	Ziyanda	Mateta	zmateta@rustenburg.gov.za		014-590-3530		Confirmed	
Kgetlengrivier LM WSA	Mr	Tertius	Chiloane	tllogelang.tc@vodamail.co.za	086-525-2546	014-543-2615	082-661-4328	Confirmed	
	Mr	Ben	Mothogoane	mothogoaneb@kgetlengrivier.gov.za				Apology	
Moses Kotane LM WSA	Mr	Tikologo	Makhoana	ttikologo@moseskotane.gov.za	014-555-6368	014-558-3489	079-507-3883	Confirmed	
		Bafedile	Moselane	moselaneb@moseskotane.gov.za		014-555-1407	082-467-6740	Declined	
Ngaka Modiri Molema DM WSA	Mr	Pholo	Nhutang	nthutangp@gmail.com	018-381-0561	018-381-0130		Apology	
	Ms	A	Blaw	blawa@nmmmdm.gov.za	018-381-0561	018-381-9438		Confirmed	
				Tilhoane B. H. thhogelet@gmail.com	018 381 1056	083 70 12172			

Mafikeng LM	Mr	Ranko	Ruiters	juanitaansen@mafikeng.gov.za	018-384-4830	018-389-0380		Confirmed	
		Keabaka	Kabushong			018-389-0111			
	Mr	Aubrey	Dube	juanita.vanbiljon@mafikeng.gov.za		018-389-0382		Confirmed	
		Ms Irene Monast		rin30cs@gmail.com		072 0911 940			Handwritten signature
Ditsobotla LM		Leslie	Morubane		018-632-5247	018-632-6955		Confirmed	
	Mr	Marlin	Clark	clarkm@ditsobotla.co.za	018-632-5247	018-632-6955			
		D	Lombard	lombardd@ditsobotla.co.za	018-632-5247	018-632-6955			
	Ms	Grace Mohr	Malebatja	malebatjagrace@gmail.com	018-632-5247	018-632-6955	071 912 003	Confirmed	Handwritten signature
	Mr	Steve	Molaodi	molaodi3@gmail.com	018 671 544	018 672 587	076 9104746	Confirmed	Handwritten signature
Ramotshere Moiloa LM	Mr	Crosby	Maema	neo.lemme@ramotshere.gov.za	018-642-3586	018-642-1081 Ext. 202			
	Mr	Oscar	Ramaphokela	oscar.ramaphokela@ramotshere.gov.za		018-642-1081			
	Mr	Kabelo	Boikanyo			018-642-1081			
	Mr	Mohammed	Rasool	mraffool@gmail.com	018-642-2642	018-642-1081		Confirmed	
				mjrassool@gmail.com					
Dr Ruth Segomotsi Mompoti - WSA	Mr	Mohammed	Hayat	hayatm@bophirima.co.za	053-927-2401	053-927 1024	082 554 2453	confirmed 3 attendees	
	Mr	Molefi	Chwene	chwenem@bophirima.co.za		053 927 1095/ 1024	079- 876 7979	Confirmed	
Lekwa-Teemane LM	Mr	Reinhardt	Oosthuizen	Oosthuizenr@lekwa-teemane.co.za	053-441-2210	053 441 2206	082 338 6313	Confirmed	
	Mr	Motaletsemang Andrew	Makuapane	makuapanea@lekwa-teemane.co.za	053-441 3735	053 441 2206	0823386314	Confirmed	
	Mr	Brian	Segapo	segapob@lekwa-teemane.co.za				Confirmed	
Mamusa LM	Mr	THOMAS	MAITIKOUSANE	thomas@mamusa.co.za	053 963 2474	053 963 1331	073 027 2067	Confirmed will send representative	Handwritten signature
	Mr	Maxwell	Mongale	mongalem@mamusalm.co.za	053 963 2474	053-963-1331	073-311-4417		Handwritten signature
		Mr SEN	CO WESTHUIS	sen@westhuis.co.za	0835248500				Handwritten signature
Greater Taung LM	Mr	Ogodiseng	Picoyame	picoyamew@taunglm.co.za	086-600-4677	539 949 457	079 749 5519	Confirmed	Handwritten signature
	Mr	M	Dube	dumam@taunglm.co.za	053 994 3917	053-994-9406		confirmed tentative	
		Ms Dolly MODISA		modisad@taunglm.co.za	053 994 997	053 994 940	0714317421		Handwritten signature
Naledi LM	Mr	Gideon Leon	Pretorius	leonpretorius961@gmail.com	053 927 1022	053 928 2207/8	079 512 6319	Confirmed	Handwritten signature
Kagisano & Molopo LM	Mr	P	Molele	molelep@kagisanolm.co.za / karabolesabe@yahoo.com	053-998-3711	053 998 3369	082-575-6412	confirmed	Handwritten signature
	Mr	Kutlwano	Dijwe	dijwek@kagisanolm.co.za	053 988 3286	053 998 3369			
Dr Kenneth Kaunda DM	Mr	Simon	Sebolai	munman@kaundadistrict.gov.za	018-473 2938	018-473 8016			
Ventersdorp LM WSA	Mr	Ogopoleng Gideon	Moremedi	gideon@ventersdorp.co.za	018-264-2051	0182648531	0828826098	Confirmed	Handwritten signature
	Mr	Pasi Lesego	Sidu	pasilesego@ventersdorp.co.za		0182648614	074-532-6670	Confirmed	Handwritten signature
	Mr	Wynand	Marx	wmarx@ventersdorp.co.za		018 264 8539	076 471 1610	Confirmed	Handwritten signature
	Ms	Maritjie	Manley	Manley@ventersdorp.co.za				Confirmed	
Tlokwe City Council WSA	Mr	Christo	Stoltz	christos@tlokwe.gov.za / joeym@tlokwe.gov.za	018-299-5443	018-299-5403		Confirmed	
	Mr	Gladstone	Moumakwe	ruthm@tlokwe.gov.za	0182970477	0182995001		Declined	
	Mr	Kleintjie	Kleinhans	kleintjiek@tlokwe.gov.za	018-299-5443	018-299-5403	083-362-4935	Confirmed	Handwritten signature
		Lance Carson		lance@tlokwe.gov.za	018 299 5433	018 299 5403	083 362 4935		Handwritten signature
City of Matlosana WSA	Mr	Itu	Lethale	ilethale@klerksdorp.org	018-462-6154	018-487-8368		Confirmed	
	Mr	AG	Strydom	gstrydom@klerksdorp.org	0184623083	0184878010			
	Mr	Ronny	Mukondeleli	rmukondeleli@klerksdorp.org	018-462-6154	018-487-8023		Confirmed	
	Ms	Brenda	de Klerk	bdeklerk@klerksdorp.org	018-462-6154	018-487-8375		Confirmed	
	Mr	Hanse	Mohapi	kkeikabile@klerksdorp.org	018-462-6154	018-487-8383		Confirmed	
Maquassi Hills WSA	Mr	James	Muller	mullerj@wollies.gov.za	018 596 1295	018-596-1067	0833-88 5216		Handwritten signature
	Mr	Nico	Morris	morris.anet@gmail.com			083388-5073	Confirmed	
		TG	Phaedi			018-389-0351		Confirmed	



RADEMANUS O DINK		MOEDI CONSULTING ENGINEERS	
		082 394 8655	FLITZ @MOEDI.CO.ZA
			KENNEL @MOEDI.CO.ZA
KOENIG MOABELO	DWA/HO	0123368174	moabelok@dwg.gov.za
John Ratomba	DWA/NW RB14	0731709673	RatombaJ@dwg.gov.za
Justin Blythe	DCM	0186325051	moiloo@editsolbottling.gov.za
KABETO PULENYANE	Ngaqo Madiri Molama DM	0715155172	kulenyane@qwaile.com
IRENE MONAISA	MAPIKENG LOCAL Mm	0120911940	rinzelcs@gmail.com
MOTSEMONTLE LOKWAE	DRKKDM	0786777824	lokwaemij@gmail.com
Madillo Maria MHLAKE	DRKKDM	0184738104	Madillomn@gmail.com
Hshukucki - Di.KKDM - Technical		0184738113	Hshukucki@kauntdistrict.gov.za
J.v.Schalkwyk Dr.KKDM - Technical		0184738069	floravsa@kauntdistrict.gov.za
Ockie van den Berg	DWA HO	082 809 2011	Vandenbergo@dwa.gov.za

APPENDIX B PRESENTATION: NORTH WEST PROVINCE SSC WORKSHOP 01

Continuation of the All Town Reconciliation Strategies in the North West Province

Strategies Steering Committee Workshop No. 1

24 April 2013

Presented by Tendani Nditwani

DWA: National Water Resource Planning



Agenda

1	WELCOME AND INTRODUCTION OF MEMBERS	T. Nditwani
2	ATTENDANCE AND APOLOGIES	T. Nditwani
3	ACCEPTANCE OF AGENDA	T. Nditwani
4	PURPOSE OF WORKSHOP	T. Nditwani
5	ROLE OF THE STRATEGIES STEERING COMMITTEE	T. Nditwani
6	INTRODUCTION OF THE STUDY	T. Nditwani
7	OVERVIEW OF STUDY ACTIVITIES	M. Esterhuizen P van Rooyen
8	BREAK-AWAY SESSIONS (PRIORITY STRATEGIES)	M. Esterhuizen
9	WAY FORWARD/STUDY PROGRAMME	M. Esterhuizen
10	GENERAL	T. Nditwani
11	DATE OF NEXT MEETING AND CLOSURE	T. Nditwani
12	LUNCH	ALL

Item 4: Purpose of the Workshop

- To introduce the study to all Stakeholders (SH)
- To establish and define the role of the Strategies Steering Committee (SSC)
- Facilitate cooperation and interaction with the SH's
- To outline findings during the Inception Phase
- To outline the scope of work, methodology, way forward and preliminary study programme
- To obtain comments and input from SH's
- To prioritise the strategies to be updated

3

Item 5: Role of Strategies Steering Committee (SSC)

Role of Strategies Steering Committee (SSC)

- To provide executive guidance to the direction and outcomes of the study
- To provide supplementary information and input from a local and regional perspective
- To facilitate strategic linkages with other initiatives / forums
- To disseminate information from study into the relevant organizations
- Incorporate strategies' recommendations into development plans such as IDP's etc.
- To facilitate the acceptance and sign-off of the updated Reconciliation Strategies

5

Stakeholder Engagement

- Communication Protocol
 - **General Enquiries**
 - Contact the Study Administrator / Liaison Officer:
 - Northern Planning Region: Ms Leoni le Roux (leonilr@uwp.co.za)
 - Central Planning Region: Mr Francis Chinyowa (francis.chinyowa@WorleyParsons.com)
 - **Study Management**
 - Contact the DWA Study Leader:
 - Northern Planning Region: Mr Tendani Nditwani (NditwaniT@dwa.gov.za)
 - Central Planning Region: Ms Dragana Ristic (risticd@dwa.gov.za)

6

Stakeholder Engagement cont.

- Communication Protocol
 - **Technical Enquiries**
 - Contact the PSP
 - Northern Planning Region Deputy Study Leader: Ms Monja Esterhuizen (monjae@uwp.co.za)
 - Central Planning Region Study Leader: Mr Pieter van Rooyen (pieterv@wvp.co.za)

7

Item 6: Introduction of the Study

Background

- Water Resources Reconciliation Strategies: To reconcile water resources with current (existing water supply schemes) and potential future water requirements
- 2004: Internal Strategic Perspective for Water Management Areas (19 in total)
- 2004: National Water Resource Strategy, First Edition
- As a result: Development of Reconciliation Strategies for Metropolitan and larger cities

9

Background cont.

- 2008: Development of Reconciliation Strategies for All Towns
 - Rudimentary strategies for all towns – improvement required
- 2012: Continuation of the DWA Planning Regions' All Town Reconciliation Strategies: Phase 1 – three year appointment (till 2015)
 - Background Information Document (BID) prepared to inform stakeholders

10

Background cont.

- Linkage to the National Water Resource Strategy (NWRS)
 - NWRS 1 (2004)
 - NWRS 1 provided overview statistics on water requirements, availability and water balances
 - Provided strategies (thematic areas) to reconcile the requirements and available resources



11

Background cont.

- Linkage to the National Water Resource Strategy (NWRS)
 - NWRS 2 (draft, 2012)
 - NWRS 2 is building on NWRS 1, not replacing it
 - Putting water at the centre of integrated development planning and decision making
 - Ensuring water for equitable growth and development
 - Protecting water ecosystems
 - Implementing water use efficiency and WC/WDM
 - Optimising water resources
 - Achieving effective water governance and Developmental Water Management

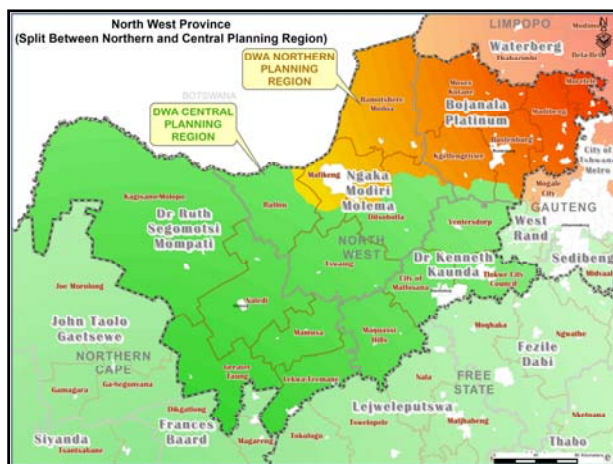
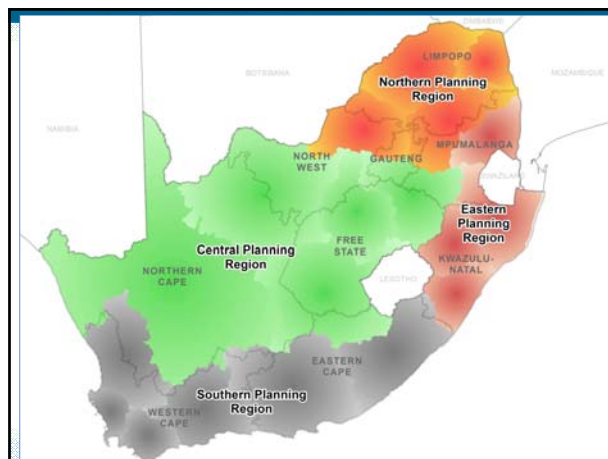


12

Background cont.

- Key general messages from All Town Studies (2009)
 - Improved management will solve largest portion of immediate problems
 - 24 Towns identified where water requirement exceed water resources availability
 - Minimal metering, outdated Water Use Licenses
 - High per capita use in many towns pointing to WC/WDM potential (see also WRC Report: TT522/12)
 - Groundwater remains a feasible source of water for many towns
 - Infrastructure constraints rather than water resource availability limitations

13



Purpose of Study

- This assignment is the first review and updating of the strategies
- It will be an **on-going** process even after these studies end
- Assist DWA and Water Services Authorities (WSAs) to:
 - Update and revise priority strategies
 - To remain technically relevant and sustainable
 - Reconcile water requirements and water resources (up to 2035)
 - Evaluation of interventions where shortfalls occur
 - Management and/or infrastructure

16

Purpose of Study cont.

- Assist DWA and WSAs (cont.) to:
 - Align strategies with known development planning processes
 - Provide recommendations for the sustainable management of water resources
- Promote the use of strategies' information in the local, district and national planning environments

17

All Town Reconciliation Strategies What is it?

- Plans of action or policy designed to ensure sufficient water is made available to towns over the next 30 years.
- Uses existing information collected (building blocks) on
 - water requirements
 - water use and infrastructure
 - water resources
 - WC/WDM
- Develop scenarios to meet water requirements for current and future use, including optimisation of local resources, improved water services and water resource management

18

All Town Reconciliation Strategies

What is it? Cont.

- It aims to answer these questions:
 - How much water is needed? - now and in the future
 - What water resources are available or can be made available?
 - Which interventions can be considered to achieve a balance between water needs and supply?
- Focuses on the projected annual water balance (high and low growth scenarios)
- Also consider the accuracy of all components that make up the water balance

19

Reconciliation Strategies: Contents

EXECUTIVE SUMMARY

- | | |
|---------------------------------|--|
| 1 Introduction | 6 Water Balance |
| 2 Population and Demographics | 7 Water Supply Infrastructure |
| 3 Current Water Requirements | 8 Sanitation |
| 4 Water Requirement Projections | 9 Reconciliation Options |
| 5 Water Resources | 10 Water Balance – With Reconciliation Options |
| | 11 Recommendations |

20

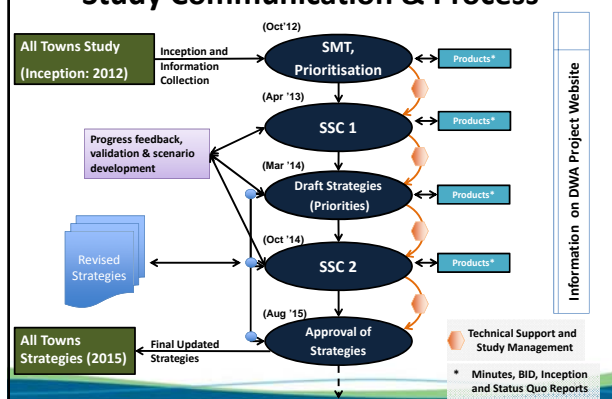
Item 7: Overview of Study Activities

Study Phases

- Inception
- Updating Priority Reconciliation Strategies
- Incorporate Comments and Finalise Reconciliation Strategies
- Study Closure

22

Study Communication & Process



Inception

- Inception
 - Establish Study Management Teams (SMT)
 - Reconnaissance review of strategies
 - Develop District Municipality Summary Reports
 - Preliminary prioritisation of strategies
 - SSC Workshop 1 (this workshop)
 - Inception Report with adjusted project programme and applicable study budget

24

1. Study Management Team (North)

- Northern Planning Region
 - DWA Study Leader: Mr Tendani Nditwani - Chief Water Resource Planner: NWRP (North)
 - DWA Regional Offices (Water Sector Support, Water Resources, RBIG officials)
 - Gauteng Province
 - Limpopo Province
 - Mpumalanga Province
 - North West Province
 - PSP: UWP Consulting (Pty) Ltd in association with WRP Consulting Engineers (Pty) Ltd

25

1. Study Management Team (Central)

- Central Planning Region
 - DWA Study Project Manager: Mr Seef Rademeyer - Chief Engineer: NWRP (Central)
 - DWA Study Leader: Ms Dragana Ristic – Engineer (Production)
 - PSP: WorleyParsons in association with WRP Consulting Engineers, Muondli Consulting and Golder Associates

26

2. Reconnaissance Review of Strategies

- Northern Planning Region
 - 211 rudimentary strategies (296 water supply scheme areas)
- Central Planning Region
 - 218 rudimentary strategies (655 water supply scheme areas)
- North West Province
 - 94 rudimentary strategies (149 water supply scheme areas)

27

3. DM Summary Report

- DM Summary reports developed based on review
- Summary of demographics, water requirements and water balance per individual strategy
- Grouped per District and Local Municipality
- Navigable Excel file
- DM Summary Reports available from DWA – Regional Offices

28

3. DM Summary Report - BPDM

- Bojanala Platinum District Municipality (BPDM)

LM	Strategies	Population (2010)	In Surplus	In Deficit	Preliminary Priority (schemes)
NW371: Moretele LM	3	208 678	2	1	3
NW372: Madibeng LM	5	358 230	5	0	2
NW373: Rustenburg LM	3	463 503	2	1	2
NW374: Kgetlengrivier LM	3	24 972	2	1	2
NW375: Moses Kotane LM	11	241 483	11	0	4
Total	25	1 296 866	22	3	13

3. DM Summary Report - NMMDM

- Ngaka Modiri Molema District Municipality (NMMDM) – Strategies Applicable to the Northern Planning Region

LM	Strategies	Population (2010)	In Surplus	In Deficit	Preliminary Priority (schemes)
NW381: Ratlou LM	9	96 674	7	2	1
NW382: Tswaing LM	6	91 537	5	1	1
NW383: Mafikeng LM	5	271 646	5	0	1
NW384: Ditsobotla LM	2	62 043	2	0	0
NW385: Ramotshere Moiloa LM	13	170 904	13	0	1
Total	35	692 804	32	3	4

3. DM Summary Report - DrKKDM

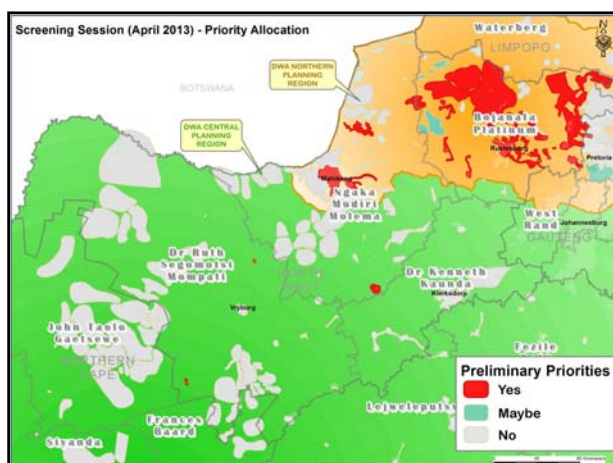
- Dr Kenneth Kaunda District Municipality (DrKKDM)

LM	Strategies	Population (2010)	In Surplus	In Deficit	Preliminary Priority (schemes)
NW401: Ventersdorp LM	1	21 198	1	0	0
NW402: Tlokwe City Council LM	1	142 440	1	0	0
NW403: City of Matlosana LM	1	281 913	1	0	0
NW404: Maquassi Hills LM	1	55 360	1	0	0
Total	4	500 911	4	0	0

3. DM Summary Report - DrRSMDM

- Dr Ruth Segomotsi Mompoti District Municipality (DrRSMDM)

LM	Strategies	Population (2010)	In Surplus	In Deficit	Preliminary Priority (schemes)
NW392: Naledi LM	2	35 219	1	1	1
NW393: Mamusa LM	4	55 259	1	3	0
NW394: Greater Taung LM	14	138 319	12	2	1
NW396: Lekwa-Teemane LM	2	47 430	2	0	0
NW397: Kagisano-Molopo LM	9	70 464	9	0	0
Total	31	346 691	25	6	2



4. Preliminary prioritisation of strategies

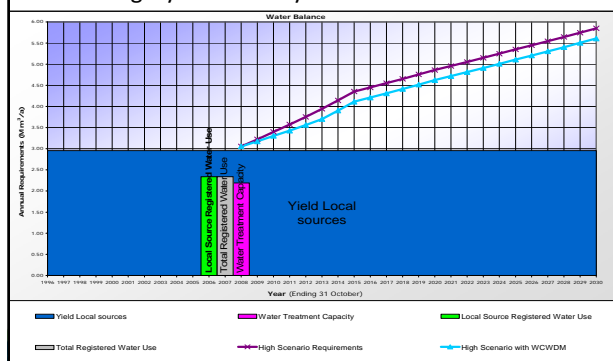
- Strategies are categorised as follows:

Water Balance Status	Category / Priority	
Town is currently in deficit	4	High
Town will be in deficit within 5 Years	3	Medium to high
Town will be in deficit in 5 to 10 years	2	Medium
Town will be in deficit after ten year or later	1	Low

34

Example

- i.e. Category 4: Currently in Deficit



Prioritisation Process

- Step 1:** Identification of Category 4 strategies (towns with a water balance currently in deficit)
- Step 2:** Eliminate towns where solutions are in an advance stage of planning or implementation (RBIG projects)
- Step 3:** Add towns where RBIG or other processes are in an early stage of planning – can still be influenced by strategies' recommendations
- Step 4:** Add any other hot spot areas identified on a national, provincial or local strategic level

36

Prioritisation Process cont.

- Key focus: **water resource** availability and quality to meet current and future water requirements
- The preliminary priority selection was confirmed at screening sessions held with DWA: National Water Resource Planning (North & Central) and DWA Regional Offices
- Requesting confirmation of priorities from SSC (this workshop)

37

Updating Priority Reconciliation Strategies

- Detailed assessment of strategies according to the following themes:
 - Demographics & economic drivers, incl. migration
 - Water requirements (importance of metering!)
 - WC/WDM
 - Infrastructure
 - Water resources (surface and groundwater)
 - Water quality
- Collate, assess data and identify gaps

38

Updating Priority Reconciliation Strategies cont.

- Develop coherent water requirement scenarios
 - Low growth scenario
 - High growth scenario
- Compile water balance diagrams (up to 2035)
- Identify potential development scenarios (management and infrastructure) for reconciliation of water requirements and water resources
- Submission of updated priority strategies to DWA
- SSC Workshop 2

39

Updating Reconciliation Strategies cont.

- Improve the level of confidence in building blocks used for scenario development
- Present the best available situation for short and long term planning
- Develop firm recommendations to be taken into account during planning (WSDP, IDP, water resources) and implementation of studies and projects
- Make a strategy applicable to the intended area of study – clustering of supply areas
- Our water: to make “some for all” a reality

40

Incorporate Comments and Finalise Reconciliation Strategies

- Incorporate comments received from SSC 2
- Include pertinent information that may impact the outcome of a strategy
- Finalise and submit reconciliation strategies
- Update the DM Summary Reports

41

Study Closure

- Signing off updated strategies by appropriate officials
- Disseminate final strategies and DM Summary Reports via DWA website
- Skills transfer workshop to DWA officials
- Compile study closure documentation – for this appointment

42

Item 8: Break-away Sessions

- Session for each DM facilitated by team member
- Confirm prioritised strategies
- Solicit information from SSC members for inclusion in the strategies

43

Break-Away Sessions (Grouping: District Municipalities)

- Group 1: Bojanala Platinum DM
- Group 2: Ngaka Modiri Molema DM
- Group 3: Dr Ruth Segomotsi Mompati DM
- Group 4: Dr Kenneth Kaunda DM

44

Item 9: Way Forward/Study Programme

- Inception (Current)
- Continuation of the Reconciliation Strategies' Development
 - Detailed assessment of prioritised strategies
 - Update strategies
 - Submission of revised strategies to DWA (continuous)
 - SSC Workshop 2 (October 2014)
 - Presentation, discussion and responses on strategies

45

Item 9: Way Forward/Study Programme

- Reconciliation Strategies' Revision and Implementation
 - Consider & incorporate comments of SSC Workshop 2
 - Prepare final draft reconciliation strategies
 - Update DM Summary Reports

46

Item 9: Way Forward/Study Programme cont.

- Study Closure
 - Signing off updated strategies by appropriate officials
 - Disseminate final strategies and DM Summary Reports via DWA website
- End of this appointment: October 2015

47

Thank You

- | | |
|---|---|
| <ul style="list-style-type: none"> • Northern Planning Region <ul style="list-style-type: none"> – For enquiries, contact: <ul style="list-style-type: none"> • DWA Study Leader: Mr Tendani Nditwani • Tel: +27 (0) 12 336-8189 • Email: Nditwanit@dwa.gov.za – Or <ul style="list-style-type: none"> • PSP Deputy Study Leader: Ms Monja Esterhuizen • Tel: +27 (0) 12 424 9709 • Email: monjae@uwp.co.za | <ul style="list-style-type: none"> • Central Planning Region <ul style="list-style-type: none"> – For enquiries, contact: <ul style="list-style-type: none"> • DWA Study Leader: Ms Dragana Ristic • Tel: +27 (0) 12 336-8302 • Email: Risticd@dwa.gov.za – Or <ul style="list-style-type: none"> • PSP Study Leader: Mr Pieter van Rooyen • Tel: +27 (0) 12 346 3496 • Email: pieterv@wvp.co.za |
|---|---|

Study Website: <http://www.dwa.gov.za/projects.aspx>
(go to All Town Strategies – Strategy Portal)

APPENDIX C BACKGROUND INFORMATION DOCUMENT (BID)

CENTRAL PLANNING REGION

NORTHERN PLANNING REGION

Continuation and Maintenance of Reconciliation Strategies for All Towns in the Central Planning Region

Information Document

April 2013



water affairs

Department:
Water Affairs
REPUBLIC OF SOUTH AFRICA

Purpose of this document

The purpose of this document is to announce the study for the continuation and maintenance of water reconciliation strategies for towns in the Central Region by the Department of Water Affairs.

The document provides background information, explains the rationale for the study and requesting participation from stakeholders to assist DWA to ensure enough water can be made available for all towns for the next thirty years.

As the Department wishes to follow a transparent process and include stakeholders as prescribed by the National Water Act of 1998, an extensive public engagement process will be followed. Part of this process involves establishing a Strategies Steering Committee (SSC) that is representative of sectors important to the study.

The SSC will be a voluntary body operating at a strategic level and ensuring that the technical aspect of the study is transparent, open and consultative and that cooperative governance is embraced.

Your organization is regarded as a key stakeholder in this process. We therefore have the pleasure to invite you to serve as a member of Northern Planning Region's All Town Reconciliation Strategies' Steering Committee and participate in regional activities during the implementation of this study.

INTRODUCTION AND CONTEXT

The Department of Water Affairs (DWA) has commissioned four three-year studies for the continuation and maintenance of the bulk water supply reconciliation strategies for all towns in the country.

The four studies cover the four Water Resource Planning Areas - North, South, East and Central and **this study covers the Central Planning Area.**

These strategies were developed in 2011 and need to be revised to remain relevant under prevailing conditions. The study is part of an on-going process to ensure sufficient water can be made available for pertinent developmental imperatives in and around all towns.

Although each town's strategy is different, key common themes were highlighted as listed below:

- Improved management will solve a significant portion of immediate problems.
- The water requirements exceed water resources availability in 41 towns (in 2011).
- Lack of water metering impedes the confidence in planning and the strategies.
- High per capita use in many towns points to the potential of saving through Water Conservation and Water Demand Management (WC/WDM).
- Groundwater remains a viable source of water for many towns.
- Supply problems relate to infrastructure constraints rather than water resource availability limitations in many towns.

Study Area

The Central Region study area is made up of the Free State Province, the greater part of the Northern Cape Province, the western part of the North West Province, a small (northern) portion of the Eastern Cape Province and a portion of the Mpumalanga Province.

The area covers fifteen District Municipalities and 214 separate town strategies were developed.

A number of towns in this region are supplied from Water Boards, which to a large extent, are already incorporated in the larger Vaal River Reconciliation Strategy.

DWA also commissioned a further study at the end of 2012 for the Development of Reconciliation Strategies for Large Bulk Water Supply Systems: Orange River, to be completed in three years.

Documentation on these strategies is available on the DWA web page: <http://www.dwa.gov.za/projects.aspx>

In brief, this study is a further endeavour to aspire to make the slogan, "some for all", to become a reality.

The intention is to continue the maintenance, review and implementation of the reconciliation strategies even after completion of this study and phase.

OBJECTIVE FOR THE STUDY

The primary objectives of the study are to review and refine all strategies, identify priority or “hot spot” towns requiring full revisions and document the progress on how the recommended interventions (strategy actions) were implemented.

This will be carried out in collaboration with the respective Regional Offices (ROs) in the Central Planning Region. The ROs will serve as the conduit through which the study team will engage with the designated Water Service Authorities - either Local or District Municipalities.

A further key objective is to promote the reconciliation strategies as a core planning product giving the actions needed to secure the required water resources.

The vision is for the strategies to be considered and incorporated when other plans such as the Water Services Development Plans and Integrated Development Plans are developed.

RECONCILIATION STRATEGIES: COMPONENTS

Lessons learned from strategies being reviewed and implemented in other parts of the country identified the components shown in **Figure 1**, as the main elements to consider in a reconciliation strategy. At the centre of the diagram the questions regarding how much water is **needed**, what water resources are **available** or could be made available, and which **interventions** can be considered to achieve a balance between demand and supply should be answered.

The coloured boxes indicate how each question is answered by undertaking various investigations and synthesising the results of several processes to formulate the most suitable strategy and plan to reconcile the water resources with the requirements.

The particular tasks and activities relevant to the Central Region were identified from the generic complements provided in **Figure 1** and are presented in the following section.

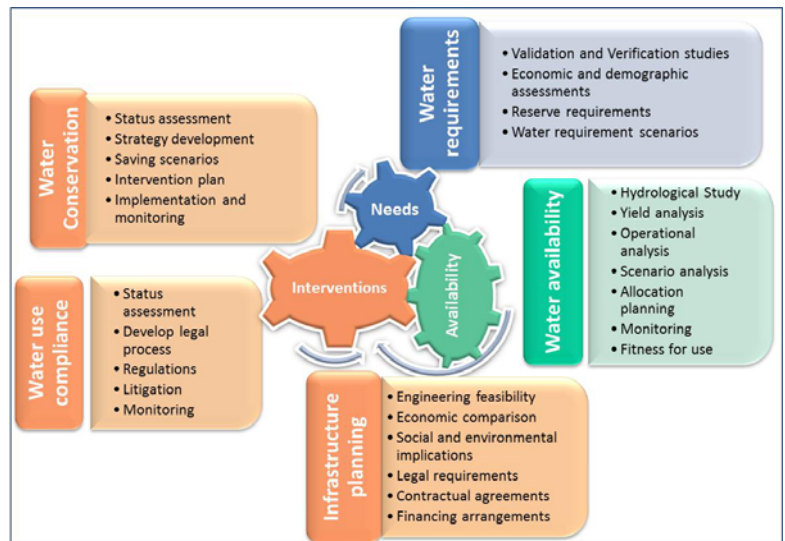


Figure 1: Reconciliation Strategies: Components

STUDY METHOD

The study for the Central Planning Area will be carried out in eight tasks, listed in the diagram below and briefly described in the following sections.



Inception Phase

The outcomes of the Inception Phase were consolidated into an Inception Report which forms the basis for the

execution of the study and will serve as the baseline against which progress of each task can be monitored and evaluated.

Once approved by the client, the Inception Report will become the Revised Terms of Reference for the remaining phases and tasks of the study.

Preliminary Stakeholder Workshops

The purpose of this task is to confirm the strategies that were identified as priority strategies as part of *Task 1: Inception Phase*. The Strategies Steering Committee workshops (one per province) will allow input from stakeholders. These strategies will then be updated during the remainder of the study period (subject to the study budget not being exceeded).

The strategies will be reviewed and evaluated on their completeness with the aim to identify the preliminary priority towns. The priority list will be presented at the workshop for discussion, amendment and the final selection will be confirmed.

Updating priority reconciliation strategies

This phase of the study encompasses the bulk of work required for the execution of this study, including the engagement of stakeholders, information sourcing, verification of data, modelling, evaluation of scenarios and

determining of reconciliation measures. It is envisaged that typical activities involved in the updating of the prioritised reconciliation strategies may include:

- Detailed assessment of the water requirements, demographics, service levels to derive future water requirement projections a planning horizon of at least 25 years (2035 and beyond).
- The status and impact of WC&WDM interventions within the relevant WSAs will be evaluated and an assessment of potential target savings that can possibly be achieved through WC&WDM will be estimated.
- Opportunities for water re-use will be explored.
- New schemes such as RBIG or other grant schemes will be incorporated in the intervention timeline.
- Potential gaps or inaccuracies in the surface and ground water availability estimate will be identified and addressed.
- Water quality related planning activities that are necessary to improve and sustain the quality of the water resource in the prioritised areas where this is an issue will be identified.
- Compare water requirements with the water resources availability to confirm the water balances status over the planning period i.e. whether and when deficits/shortfalls occur.
- Identify development scenarios/options that can meet the long term water requirement projections for areas where shortfalls/deficits occur over the planning period with preference to utilising the local resources first (groundwater, re-use etc.).
- The reconciliation strategies for supply areas that depend on the same water resource will be combined (where appropriate) in order to confirm the combined strategy and water balance situation.

The deliverable of this task will be updated reconciliation strategies for the prioritised towns.

Second Stakeholder Workshops

Once approved by DWA, the strategies will be distributed to the stakeholders and the Second Strategies Steering Committee workshops will be arranged for each of the provinces with the following objectives:

- To present the updated/revised strategies, to obtain comments, further guidance and agreement on the acceptability of the results.
- Agree on the preferred development scenarios and on the way forward for the compilation of the reconciliation strategies.

The deliverable of this task will be the Second Provincial Stakeholder workshops.

Complete updating of reconciliation strategies

The reconciliation strategies will be completed and finalised through the following processes:

- Consider the comments received from the Second Stakeholder Workshop and undertake any further studies that are required to finalise reconciliation strategies.
- Update prioritised strategies with any additional/revised information received.
- Add any significant developments, augmentation options, etc., to any of the strategies. This is to provide descriptive text to indicate where the strategies are superseded.

Based on the above, compile the final reconciliation strategies and submit to DWA for approval.

Addressing ad hoc study requests

During the course of the assignment, the study team may be requested to undertake any other ad hoc studies and/or investigations as may be required in support of the project. The study leader will assess the scope of work, the resources and time that will be required to do the work and make an estimate of the costs involved. On approval by the Client the work will then be undertaken.

Study management and administration

A key success factor for a multi-disciplinary study of this nature is the proper and co-ordinated management of the team. This is to ensure that all aspects of the study are adequately addressed by the appropriate staff and specialist(s) to the correct level of detail without losing focus of the essential holistic approach and without unnecessary duplication.

All activities will be monitored continuously to ensure that each one is completed on time and within budget. The management of the study will conform to the latest version of DWA's "Guidelines for Structuring the Management of Studies".

Provision has been made for Study Management Committee (SMC) and Support Group (SG) meetings to guide the day to day management of the study.

All administrative and monitoring activities for the smooth running of the study form part of this task

Study termination

Once approved by DWA, the final priority strategies will be distributed to the stakeholders for signing off by the identified stakeholders.

All study reports and study deliverables will be finalized and submitted during this phase. The final strategies will be incorporated into DWA's database which will then be uploaded onto the DWA's website.

Communication enquiries

General: contact Mr Francis Chinyowa, Tel: 27(0)12 745 2000, Fax: +27(0)12 745 2139, e-mail:

francis.chinyowa@WorleyParsons.com. Technical: contact Pieter van Rooyen / Colin Talanda, Tel: 27 (0) 12 346 3496, Fax: 27(0) 12 346 9956 or e-mail:

pieterv@wrp.co.za, colint@wrp.co.za

For more information on the study, visit the Department's website at: <http://www.dwa.gov.za/projects.aspx>

PRIORITISATION PROCESS

The steps that were followed by the study team to identify the preliminary priority towns are presented below:

- **Step 1:** Identification of Category 4 strategies (towns currently in deficit).
- **Step 2:** Eliminate towns where solutions are in an advance stage of planning or implementation (RBIG projects)
- **Step 3:** Add towns where RBIG or other processes are in an early stage of planning and can still be influenced by strategy recommendations.
- **Step 4:** Add any other water resource related hot spot areas.
- The final selection was confirmed at a screening sessions held with DWA: National Water Resources Planning (Central).
- Present, discuss and request confirmation from the Strategies Steering Committee.

The assessment identified 54 of the strategies (out of the total of 214 strategies) as priority areas. The breakdown per province is listed in the table below, followed by a summary table giving pertinent information on each of the priority areas.

Province	Number of priority strategies
	Total
Free State	24
Northern Cape	27
North West	3
Mpumalanga	0
Total	54

LIST OF PRELIMINARY PRIORITY TOWNS

Province	District Municipality	Local Municipality	Name of Cluster/Scheme	Water Balance Category
Northern Cape	John Taolo Gaetsewe	Moshaweng	Ward 5	4
		Ga-Segonyana	Mothibistad	4
		Gamagara	Olifantshoek	1
			Dibeng	3
			Kathu	3
		John Taolo Gaetsewe DMA	Hotazel	1
			Van Zylsrust	4
	Namakwa	Hantam	Brandvlei	2
			Calvinia	3
		Kamiesberg	Garies	4
			Hondeklip Bay	4
			Kamieskroon	4
			Leliefontein	4

Province	District Municipality	Local Municipality		Name of Cluster/Scheme	Water Balance Category	
Northern Cape	Pixley ka Seme	Emthanjeni		De Aar	1	
		Kareeberg		Carnarvon	1	
				Vanwyksvlei	3	
		Renosterberg		Vanderkloof Urban	1	
		Thembelihle		Strydenburg	4	
		Siyathemba		Marydale	4	
		Siyanda	Mier	Askham	4	
				Klein Mier	4	
				Welkom	4	
				Rietfontein	4	
		Tsantsabane		Postmasburg	1	
		Frances Baard	Sol Plaatjie		Kimberley	1
			Dikgatlong		Windsorton	1
					Delpportshoop	1
	Free State		Xhariep	Letsemeng		Koffiefontein Urban
		Petrusburg Urban			3	
Kopanong				Jagersfontein Urban	4	
				Fauresmith Urban	4	
Motheo		Naledi		Dewetersdorp Urban	To confirm	
				Wepener Urban	To confirm	
				Van Stadensrus Urban	1	
		Mantsopa		Tweespruit Urban	1	
				Hobhouse Urban	1	
				Excelsior Urban	To confirm	
Lejweleputswa	Masilonyana		Winburg Urban	1		
			Brandfort Urban	2		
			Ikgomotseng Urban	1		
			Theunissen Urban	1		
			Verkeerdevlei Urban	4		
	Tokologo		Boshof	4		
			Dealesville	4		
	Tswelopele		Bultfontein Urban	1		
		Hoopstad Urban	1			

Province	District Municipality	Local Municipality		Name of Cluster/Scheme	Water Balance Category
Free State					
	Thabo Mofutsanyane	Setsoto		Clocolan Urban	3
				Ficksburg Urban	3
				Marquard Urban	4
				Senekal Urban	2
		Dihlabeng		Rosendale Urban	To confirm
		Nketoana		Arlington Urban	4
				Reitz Urban	1
				Lindley Urban	4
				Petrus Steyn Urban	4
	Fezile Dabi	Moghaka		Kroonstad Urban	4
				Steynsrus Urban	3
				Viljoenskroon Urban	4
North West	Ngaka Modiri Molema	Tswaing		Ottosdal	4
	Dr. Ruth S. Mompati	Naledi LM		Stella	4
		Greater Taung LM		Reivilo	4

Continuation and Maintenance of Reconciliation Strategies for All Towns in the Northern Planning Region

Information Document

April 2013



water affairs

Department:
Water Affairs
REPUBLIC OF SOUTH AFRICA

Purpose of this document

The purpose of this document is to announce the study for the continuation and maintenance of water reconciliation strategies for towns in the northern region by the Department of Water Affairs.

The document provides background information, explains the rationale for the study and requesting participation from stakeholders to assist DWA to ensure enough water can be made available for all towns for the next thirty years.

As the Department wishes to follow a transparent process and include stakeholders as prescribed by the National Water Act of 1998, an extensive public engagement process will be followed. Part of this process involves establishing a Strategies Steering Committee (SSC) that is representative of sectors important to the study.

The SSC will be a voluntary body operating at a strategic level and ensuring that the technical aspect of the study is transparent, open and consultative and that cooperative governance is embraced.

Your organization is regarded as a key stakeholder in this process. We therefore have the pleasure to invite you to serve as a member of Northern Planning Region's All Town Reconciliation Strategies' Steering Committee and participate in regional activities during the implementation of this study.

INTRODUCTION AND CONTEXT

The Department of Water Affairs (DWA) has commissioned four three-year studies for the continuation and maintenance of the bulk water supply reconciliation strategies for all towns in the country.

The studies cover the four Water Resource Planning Areas - North, South, East and Central and **this study covers the Northern Planning Area.**

These strategies were developed in 2011 and need to be revised to remain relevant under prevailing conditions. The study is part of an on-going process to ensure sufficient water can be made available for pertinent developmental imperatives in and around all towns.

Although each town's strategy is different, key common themes were highlighted as listed below:

- Improved management will solve a significant portion of immediate problems.
- In the Northern Planning Region, the water requirements in 2010 exceeded water resources availability in 64 towns.
- Lack of water metering impedes the confidence in planning and the strategies.
- High per capita use in many towns points to the potential of saving through Water Conservation and Water Demand Management (WC/WDM).
- Groundwater remains a viable source of water for many towns.
- Supply problems relate to infrastructure constraints rather than water resource availability limitations in many towns.

Study Area

The Northern Region study area is made up of the entire Limpopo Province, the north-west part of the North West Province and the northern parts of the Gauteng and Mpumalanga Provinces respectively. Please see the map for more detailed information.

The area covers eight Districts and one Metropolitan Municipality and 229 separate town strategies were developed.

A number of towns in this region are supplied from Water Boards, which to a large extent, are already incorporated in the larger Reconciliation Strategies for the Vaal River (2009), Crocodile (West) River (2012) and Olifants River (2011) Water Supply Systems respectively.

DWA also commissioned a further study at the end of 2012 for the Development of a Reconciliation Strategy for the Luvuvhu and Letaba Water Supply System, to be completed in three years.

Documentation on these strategies is available on the DWA web page: <http://www.dwa.gov.za/projects.aspx>

In brief, this study is a further endeavour to aspire to make the slogan, "some for all", to become a reality.

The intention is to continue the maintenance, review and implementation of the reconciliation strategies even after completion of this study and phase.

OBJECTIVE FOR THE STUDY

The primary objectives of the study are to review and refine all strategies, identify priority or “hot spot” towns requiring full revisions and document the progress on how the recommended interventions (strategy actions) were implemented.

This will be carried out in collaboration with the respective Regional Offices (ROs) in the Northern Planning Region. The ROs will serve as the conduit through which the study team will engage with the designated Water Service Authorities - either Local or District Municipalities.

A further key objective is to promote the reconciliation strategies as a core planning product giving the actions needed to secure the required water resources.

The vision is for the strategies to be considered and incorporated when other plans such as the Water Services Development Plans and Integrated Development Plans are developed.

RECONCILIATION STRATEGIES: COMPONENTS

Lessons learned from strategies being reviewed and implemented in other parts of the country identified the components shown in **Figure 1**, as the main elements to consider in a reconciliation strategy. At the centre of the diagram the questions regarding how much water is **needed**, what water resources are **available** or could be made available, and which **interventions** can be considered to achieve a balance between demand and supply should be answered.

The coloured boxes indicate how each question is answered by undertaking various investigations and synthesising the results of several processes to formulate the most suitable strategy for an area and plan to reconcile the water resources with the requirements.

The particular tasks and activities relevant to the Northern Region were identified from the generic complements provided in **Figure 1** and are presented in the following section.

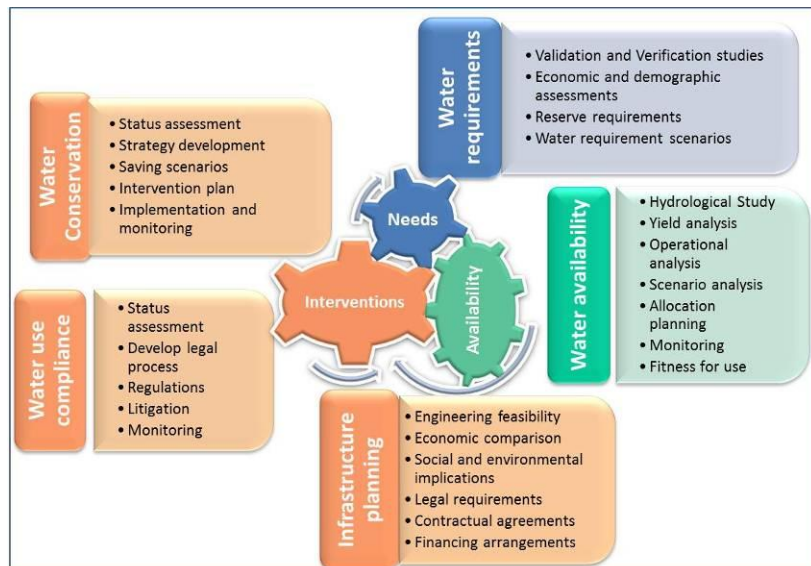


Figure 1: Reconciliation Strategies: Components

STUDY METHOD

The study for the Northern Planning Area will be carried out in eight tasks, listed in the diagram below and briefly described in the following sections.



Inception Phase

The outcomes of Inception Phase are consolidated into an Inception Report which forms the basis for the execution

of the study and will serve as the baseline against which progress of each task can be monitored and evaluated.

Once approved by the client, the Inception Report will become the Revised Terms of Reference for the remaining phases and tasks of the study.

Preliminary Strategies Steering Committee Workshops

The purpose of this task is to confirm the strategies that were identified as priority strategies as part of *Task 1: Inception Phase*. The Strategies Steering Committee workshops (one per province) will allow input from stakeholders. These strategies will then be updated during the remainder of the study period (subject to the study budget not being exceeded).

The strategies will be reviewed and evaluated on their completeness with the aim to identify the preliminary priority towns. The priority list will be presented at the workshop for discussion, amendment and the final selection will be confirmed.

Updating priority reconciliation strategies

This phase of the study encompasses the bulk of work required for the execution of this study, including the engagement of stakeholders, information sourcing,

verification of data, modelling, evaluation of scenarios and determining of reconciliation measures. It is envisaged that typical activities involved in the updating of the prioritised reconciliation strategies may include:

- Detailed assessment of the water requirements, demographics, service levels to derive future water requirement projections a planning horizon of at least 25 years (up to 2035).
- The status and impact of WC/WDM interventions within the relevant WSAs will be evaluated and an assessment of potential target savings that can possibly be achieved through WC/WDM will be estimated.
- Opportunities for water re-use will be explored.
- New schemes such as RBIG or other grant schemes will be incorporated in the intervention timeline.
- Potential gaps or inaccuracies in the surface and groundwater availability estimates will be identified and addressed.
- Water quality related planning activities that are necessary to improve and sustain the quality of the water resource in the prioritised areas where this is an issue, will be identified.
- Compare water requirements with the water resources availability to confirm the water balances status over the planning period i.e. whether and when deficits/shortfalls occur.
- Identify development scenarios/options that can meet the long term water requirement projections for areas where shortfalls/deficits occur over the planning period with preference to utilising local resources first (groundwater, re-use etc.).
- The reconciliation strategies for supply areas that depend on the same water resource will be combined (where appropriate) in order to confirm the combined strategy and water balance situation.

The deliverable of this task will be updated reconciliation strategies for the prioritised towns.

Second Strategies Steering Committee Workshops

Once approved by DWA, the strategies will be distributed to stakeholders and the Second Strategies Steering Committee workshops will be arranged for each of the provinces with the following objectives:

- To present the updated/revised strategies, to obtain comments, further guidance and agreement on the acceptability of the results.
- Agree on the preferred development scenarios and on the way forward for the compilation of the reconciliation strategies.

The deliverable of this task will be the Second Provincial Strategies Steering Committee workshops.

Complete updating of reconciliation strategies

The reconciliation strategies will be completed and finalised through the following processes:

- Consider the comments received from the Second Strategies Steering Committee workshops and undertake further studies where possible, that are required to finalise reconciliation strategies.
- Update prioritised strategies with any additional/revised information received.
- Add any significant developments, augmentation options, etc., to any of the strategies. This is to provide descriptive text to indicate where the strategies are superseded.

Based on the above, compile the final reconciliation strategies and submit to DWA for approval.

Addressing ad hoc study requests

During the course of the assignment, the study team may be requested to undertake any other ad hoc studies and/or investigations as may be required in support of the study. The study leader will assess the scope of work, the resources and time that will be required to do the work and make an estimate of the costs involved. On approval by the Client the work will then be undertaken.

Study management and administration

A key success factor for a multi-disciplinary study of this nature is the proper and co-ordinated management of the team. This is to ensure that all aspects of the study are adequately addressed by the appropriate staff and specialist(s) to the correct level of detail without losing focus of the essential holistic approach.

All activities will be monitored continuously to ensure that each one is completed on time and within budget. The management of the study will conform to the latest version of DWA's "Guidelines for Structuring the Management of Studies".

Provision has been made for Study Management Team (SMT) and Support Group (SG) meetings to guide the day-to-day management of the study.

This task ensures efficient and continuous administrative and monitoring activities for the duration of this study.

Study termination

Once approved by DWA, the final priority strategies will be distributed to the stakeholders for signing off by the identified stakeholders.

All study reports and study deliverables will be finalised and submitted during this phase. The final strategies will be incorporated into DWA's database which will then be uploaded onto the DWA's website.

Communication enquiries

General: contact Ms Leoni Le Roux, Tel: +27 (0) 14 597 1223, Fax: +27 (0) 86 537 2721 or e-mail: leonilr@uwp.co.za.

Technical: contact Ms Monja Esterhuizen or Mr Leon de Jager, Tel: 27 (0) 12 424 9709, Fax: 27 (0) 12 460 4071 or e-mail: monjae@uwp.co.za, leondj@uwp.co.za.

For more information on the study, visit the Department's website at: <http://www.dwa.gov.za/projects.aspx>

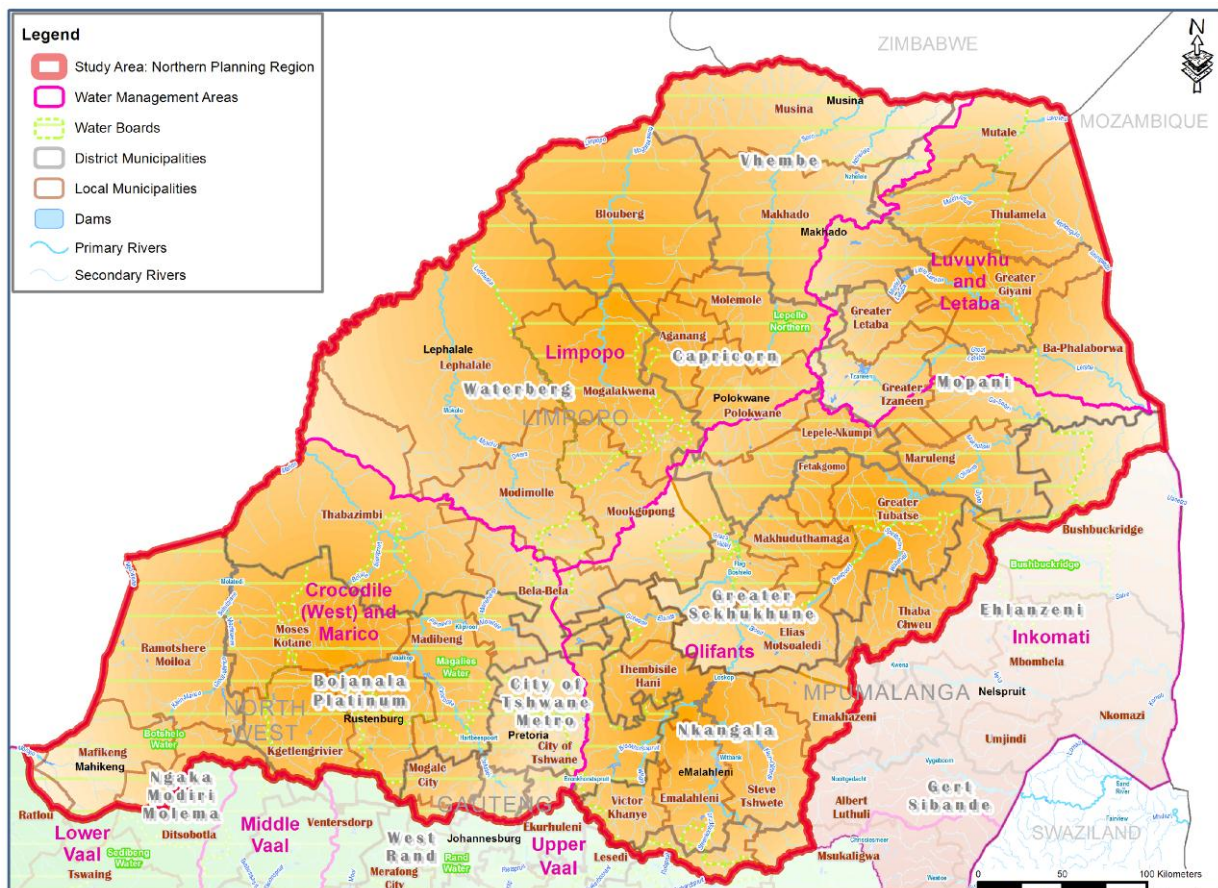
PRIORITISATION PROCESS

The steps that were followed by the study team to identify the preliminary priority towns are presented below:

- **Step 1:** Identification of Category 4 strategies (towns currently in deficit).
- **Step 2:** Eliminate towns where solutions are in an advance stage of planning or implementation (RBIG projects).
- **Step 3:** Add towns where RBIG or other processes are in an early stage of planning and can still be influenced by strategy recommendations.
- **Step 4:** Add any other hot spot areas identified on a national, provincial or local strategic level.
- The final selection was confirmed at a screening sessions held with DWA: National Water Resources Planning (Northern) and DWA Regional Offices.
- Present, discuss and request confirmation from the Strategies Steering Committee.

The 2013 preliminary assessment identified 51 of the strategies (out of the total of 229 strategies assessed) as priority areas. The breakdown per province is listed in the table below.

Province	Number of priority strategies
Gauteng	0
Limpopo	28
Mpumalanga	6
North West	17
Total	51



Continuation of the Northern Planning Region's All Town Reconciliation Strategies: Phase 1

APPENDIX D LIST OF PRIORITY STRATEGIES FOR THE NORTH WEST PROVINCE

CENTRAL PLANNING REGION

NORTHERN PLANNING REGION

Priority Allocation for the Continuation of the Study, Phase 1 (WP10587) **

(Per Province, DM, LM and All Towns Report Name)

NW SSC Workshop - 24 April 2013 - Results of District Municipality Break-Away: Dr Ruth Segomotsi Mompoti DM, Ngaka Modiri Molema DM, Dr Kenneth Kaunda DM

Province	District Municipality Name (based on approximate geographic location)	Local Municipality Name (based on approximate geographic location)	Preliminary Priority	All Towns ID No.	All Towns Report Name (per water supply cluster) *	Step 1	Identification of Category 4 strategies (towns with a water balance currently in deficit)
						Step 2	Eliminate towns where solutions are in an advance stage of planning or implementation (RBIG projects)
						Step 3	Add towns where RBIG or other processes are in an early stage of planning – can still be influenced by strategies' recommendations
						Step 4	Add any other hot spot areas identified on a national, provincial or local strategic level
						Step 5: SSC	Obtain input and comments from the Strategies Steering Committee Workshop and finalise priorities
						Step 5: SSC	
Prov	DM Code and Name	LM Code and Name	Prelim Priority	Town ID No.	Name of Cluster or Scheme	SSC Priority Apr 2013	SSC Comments
NW	DC40: Dr Kenneth Kaunda	GT484: Merafong City		255	Elandsfontein	No	
NW	DC40: Dr Kenneth Kaunda	NW401: Ventersdorp	No	240	Ventersdorp	No	Settlements outside Ventersdorp are experiencing groundwater supply problems – these are however related to services and hence the strategy remains non-prioritised.
NW	DC40: Dr Kenneth Kaunda	NW402: Tlokwe		242	Klipdrift	No	
NW	DC40: Dr Kenneth Kaunda	NW402: Tlokwe		243	Oorbietjiesfontein	No	
NW	DC40: Dr Kenneth Kaunda	NW402: Tlokwe	No	241	Potchefstroom	Yes	available resources (according to the strategy balance the limit is reached in 2015 (High Scenario). There is an RBIG project for Potchefstroom (there is no RBIG project in the spreadsheet used in the prioritisation and details need to be confirmed). The municipality also said that the population figures used in the strategy are underestimated (Strategy: 137990 (2008) to 180628 (2030) whereas the municipality says the population is currently around 180 000 already). The municipality mentioned that they did a survey on number of people per household and they found that the general assumption of 4.5 people per household is too low in Potchefstroom. The strategy status should be changed to Prioritised.
NW	DC40: Dr Kenneth Kaunda	NW403: City of Matlosana		244	Stilfontein	No	
NW	DC40: Dr Kenneth Kaunda	NW404: Maquassi Hills		250	Kareeboom	No	
NW	DC40: Dr Kenneth Kaunda	NW404: City of Matlosana	No	245	Klerksdorp	No	water resources are sufficient but there are water services and maintenance problems – internal reservoir storage expansions required. The municipality commented that the population figures presented in the strategy are also too low. The villages which the municipality bases this statement on and which should be included under the strategy are Klerksdorp, Jouberton, Orkney, Kanana, Stilfontein, Khunma, Hartebeesfontein and Tiyani. The strategy status should remain non-prioritised.
NW	DC40: Dr Kenneth Kaunda	NW404: Maquassi Hills		251	Leeudoringstad	No	
NW	DC40: Dr Kenneth Kaunda	NW404: Maquassi Hills		252	Makwassie	No	
NW	DC40: Dr Kenneth Kaunda	NW404: Maquassi Hills		253	Witpoort	No	
NW	DC40: Dr Kenneth Kaunda	NW404: Maquassi Hills	No	254	Wolmaransstad	No	The only comment received was that the population estimates in the strategy are also low (Strategy: 55360 (2008) to 66257 (2030) whereas the municipality says the current population is 96 000 people already). The town is currently not experiencing a water resources shortfall and hence the strategy remains non-prioritised.
NW	DC40: Dr Kenneth Kaunda	NW405: City of Matlosana		246	Dominionville	No	
NW	DC40: Dr Kenneth Kaunda	NW406: City of Matlosana		247	Hartebeesfontein	No	
NW	DC40: Dr Kenneth Kaunda	NW407: City of Matlosana		248	Jouberton	No	
NW	DC40: Dr Kenneth Kaunda	NW408: City of Matlosana		249	Orkney	No	
NW	DC39: Dr. Ruth S. Mompoti	NW392: Naledi	Yes	218	Stella	Yes	
NW	DC39: Dr. Ruth S. Mompoti	NW392: Naledi	No	217	Vryburg	No	
NW	DC39: Dr. Ruth S. Mompoti	NW393: Mamusa	No	219	Amalia	Yes	BH yield low; GWQ problems
NW	DC39: Dr. Ruth S. Mompoti	NW393: Mamusa	No	220	Glaudina	No	
NW	DC39: Dr. Ruth S. Mompoti	NW393: Mamusa	No	222	Migdol	No	
NW	DC39: Dr. Ruth S. Mompoti	NW393: Mamusa	No	221	Schweizer-Reneke	No	
NW	DC39: Dr. Ruth S. Mompoti	NW394: Greater Taung	No	232	Bogosing BWS	No	
NW	DC39: Dr. Ruth S. Mompoti	NW394: Greater Taung	No	226	Kgomotso	No	Dam safety a concern for Spitskop Dam
NW	DC39: Dr. Ruth S. Mompoti	NW394: Greater Taung	No	224	Kokomeng	No	
NW	DC39: Dr. Ruth S. Mompoti	NW394: Greater Taung	No	229	Loselong	No	
NW	DC39: Dr. Ruth S. Mompoti	NW394: Greater Taung	No	228	Madipelesa	No	

Prov	DM Code and Name	LM Code and Name	Prelim Priority	Town ID No.	Name of Cluster or Scheme	SSC Priority Apr 2013	SSC Comments
NW	DC39: Dr. Ruth S. Mompoti	NW394: Greater Taung	No	230	Maganeng	No	
NW	DC39: Dr. Ruth S. Mompoti	NW394: Greater Taung	No	227	Majeakgoro	No	
NW	DC39: Dr. Ruth S. Mompoti	NW394: Greater Taung	No	225	Manthestad	No	
NW	DC39: Dr. Ruth S. Mompoti	NW394: Greater Taung	No	234	Modimong	No	
NW	DC39: Dr. Ruth S. Mompoti	NW394: Greater Taung	No	233	Mokgareng	No	
NW	DC39: Dr. Ruth S. Mompoti	NW394: Greater Taung	No	235	Motsweding	No	
NW	DC39: Dr. Ruth S. Mompoti	NW394: Greater Taung	No	223	Pitsong	No	
NW	DC39: Dr. Ruth S. Mompoti	NW394: Greater Taung	No	231	Pudimoe	No	
NW	DC39: Dr. Ruth S. Mompoti	NW394: Greater Taung	Yes	236	Reivilo	Yes	
NW	DC39: Dr. Ruth S. Mompoti	NW396: Lekwa-Teemane	No	238	Bloemhof	No	
NW	DC39: Dr. Ruth S. Mompoti	NW396: Lekwa-Teemane	No	239	Christiana	No	
NW	DC39: Dr. Ruth S. Mompoti	NW397: Kagisano	No	212	Bonabona	Maybe	BH yield low; GWQ problems
NW	DC39: Dr. Ruth S. Mompoti	NW397: Kagisano	No	214	Ga-Modikwe	Maybe	BH yield low; GWQ problems
NW	DC39: Dr. Ruth S. Mompoti	NW397: Kagisano	No	208	Ganyesa	Maybe	BH yield low; GWQ problems
NW	DC39: Dr. Ruth S. Mompoti	NW397: Kagisano	No	211	Kgogole	Maybe	BH yield low; GWQ problems
NW	DC39: Dr. Ruth S. Mompoti	NW397: Kagisano	No	213	Morokweng	Maybe	BH yield low; GWQ problems
NW	DC39: Dr. Ruth S. Mompoti	NW397: Kagisano	No	216	Piet Plessis	Maybe	BH yield low; GWQ problems
NW	DC39: Dr. Ruth S. Mompoti	NW397: Molopo	No	237	Pomfret	Maybe	BH yield low; GWQ problems
NW	DC39: Dr. Ruth S. Mompoti	NW397: Kagisano	No	209	Pouval	Maybe	BH yield low; GWQ problems
NW	DC39: Dr. Ruth S. Mompoti	NW397: Kagisano	No	210	Tlhakgameng	Maybe	BH yield low; GWQ problems
NW	DC39: Dr. Ruth S. Mompoti	NW397: Kagisano	No	215	Tseoge	Maybe	BH yield low; GWQ problems
NW	DC38: Ngaka Modiri Molema	NW381: Ratlou	No	188	Logagane	No	
NW	DC38: Ngaka Modiri Molema	NW382: Ratlou	No	189	Makgori	No	
NW	DC38: Ngaka Modiri Molema	NW382: Tswaing	No	197	Sannieshof-A	No	
NW	DC38: Ngaka Modiri Molema	NW383: Tswaing	No	198	Atamelang	Yes	Atamelang village. Mr Rasool raised the point and he confirmed that it is indeed the Atamelang village where the groundwater levels seem to be dropping, possibly as a result of farmers' abstracting groundwater in the area.
NW	DC38: Ngaka Modiri Molema	NW383: Ratlou	No	190	Motlhabeng_Setla-Kgobi	No	
NW	DC38: Ngaka Modiri Molema	NW384: Ratlou	No	191	Motsitlane	No	
NW	DC38: Ngaka Modiri Molema	NW384: Tswaing	No	199	Sannieshof-B	No	
NW	DC38: Ngaka Modiri Molema	NW385: Ratlou	No	192	Maipeng	No	
NW	DC38: Ngaka Modiri Molema	NW385: Tswaing	No	200	Mofutso	No	
NW	DC38: Ngaka Modiri Molema	NW386: Tswaing	No	201	Delareyville	No	
NW	DC38: Ngaka Modiri Molema	NW386: Ratlou	No	193	Old Kraaipan	No	
NW	DC38: Ngaka Modiri Molema	NW387: Tswaing	Yes	202	Ottosdal	Yes	
NW	DC38: Ngaka Modiri Molema	NW387: Ratlou	No	194	Setlagoli	No	
NW	DC38: Ngaka Modiri Molema	NW388: Ratlou	No	195	Disaneng	No	
NW	DC38: Ngaka Modiri Molema	NW389: Ratlou	No	196	Phitshane	No	

* Note that some strategies include more than one water supply scheme in the report - based on a supply area using the same water resource

** The allocation of priorities is based on the water balance, strategic importance and water source quality

SSC Workshop Priority Allocation - DWA Central Planning Region				
Summary				
DM	Maybe	No	Yes	Grand Total
DC38: Ngaka Modiri Molema	0	13	2	15
DC39: Dr. Ruth S. Mompoti	10	19	3	32
DC40: Dr Kenneth Kaunda	0	15	1	16
Grand Total	10	47	6	63

Northern Planning Region: All Town Reconciliation Strategies										App D2
Priority Allocation for the Continuation of the Study, Phase 1 (WP10587) **										
(Per Province, DM, LM and All Towns Report Name)										13-May-13
NW SSC Workshop - 24 April 2013 - Results of District Municipality Break-Away: Bojanala Platinum DM, Ngaka Modiri Molema DM										
Province	District Municipality Name (based on approximate geographic location)	Local Municipality Name (based on approximate geographic location)	Water Magement Area	All Towns Report ID No.	All Towns Report Name (per water supply cluster)	Step 1	Identification of Category 4 strategies (towns with a water balance currently in deficit)			
						Step 2	Eliminate towns where solutions are in an advance stage of planning or implementation (RBIG projects)			
						Step 3	Add towns where RBIG or other processes are in an early stage of planning – can still be influenced by strategies' recommendations			
						Step 4	Add any other hot spot areas identified on a national, provincial or local strategic level			
						Step 5: SSC	Obtain input and comments from the Strategies Steering Committee Workshop and finalise priorities			
						Step 5: SSC	Step 1	Step 4	Strategies Cluster	
Prov	DM Code and Name	LM Code and Name	WMA Name	AT Rpt ID No.	Report Name	SSC Priority	Deficit	5 Strategic Areas	Cluster	Comments
NW	DC37: Bojanala Platinum	NW371: Moretele	Crocodile (West) and Marico	182	Dikgophaneng and Fafung Strategy	Maybe	Low		Dikgophaneng	GWQ problem
NW	DC37: Bojanala Platinum	NW371: Moretele	Crocodile (West) and Marico	182	Dikgophaneng and Fafung Strategy	Maybe	Low		Fafung	GWQ problem
NW	DC37: Bojanala Platinum	NW371: Moretele	Crocodile (West) and Marico	181	Gahabedi-Ngobi Transactie Wellfields Cluster Strategy	No	High		GaHabedi-Ngobi Transactie Wellfields	
NW	DC37: Bojanala Platinum	NW371: Moretele	Crocodile (West) and Marico	179	Moretele 1 GWS Strategy	No	Low		Moretele GWS	WC/WDM to address. RBIG, MIG being implemented
NW	DC37: Bojanala Platinum	NW371: Moretele	Crocodile (West) and Marico	180	Selepe-Tloonane Cluster Strategy	No	Medium		Selepe Tloonane	
NW	DC37: Bojanala Platinum	NW372: Madibeng	Crocodile (West) and Marico	183	Hartebeespoort Supply Area Strategy	Maybe	Medium to high		Greater Brits	Split strategy, review & update strategy information
NW	DC37: Bojanala Platinum	NW372: Madibeng	Crocodile (West) and Marico	183	Hartebeespoort Supply Area Strategy	Maybe	Medium to high		Hartebeespoort Dam area	Split strategy, review & update strategy information
NW	DC37: Bojanala Platinum	NW372: Madibeng	Crocodile (West) and Marico	184	Sandspruit Rand Water Strategy	Maybe	High		Sandspruit OD1&OD2B	Split strategy; East - apply WC/WDM. West - review & update strategy
NW	DC37: Bojanala Platinum	NW373: Rustenburg	Crocodile (West) and Marico	185	Bafokeng RWS Strategy	Maybe	High		Bafokeng (Luka,Phokeng)	Review & update strategy information - better information available. Get input from Magalies Water
NW	DC37: Bojanala Platinum	NW373: Rustenburg	Crocodile (West) and Marico	186	Kortbegrip Water Supply Strategy	No	Low		Kortbegrip (Vaalkop BWS Southern)	
NW	DC37: Bojanala Platinum	NW373: Rustenburg	Crocodile (West) and Marico	32	Rustenburg Vaalkop BWS Strategy	Maybe	High		Rustenburg	Resolve institutional items - planning (DWA, WSAs, Water Boards), regional water supply problem; review & update strategy - better information available.
NW	DC37: Bojanala Platinum	NW374: Kgetlengrivier	Crocodile (West) and Marico	187	Borolelo and Swarttruggens Cluster Strategy	Yes	Low		Borolelo Swarttruggens	Review & update strategy - migration & growth due to nearby Rustenburg development & employment node
NW	DC37: Bojanala Platinum	NW374: Kgetlengrivier	Crocodile (West) and Marico	188	Koster Dam Strategy	Yes	High		Koster	Review & update strategy - migration & growth due to nearby Rustenburg development & employment node
NW	DC37: Bojanala Platinum	NW375: Moses Kotane	Crocodile (West) and Marico	189	Baphalane Water Supply Scheme Strategy	No	Low		Baphalane	
NW	DC37: Bojanala Platinum	NW375: Moses Kotane	Crocodile (West) and Marico	190	Bapong Water Supply Scheme Strategy	No	High		Bapong	
NW	DC37: Bojanala Platinum	NW375: Moses Kotane	Crocodile (West) and Marico	191	Disake Water Supply Scheme Strategy	No	Low		Disake/MorgaIwaneng	
NW	DC37: Bojanala Platinum	NW375: Moses Kotane	Crocodile (West) and Marico	192	Koffiekraal Water Supply Scheme Strategy	Maybe	Low		Koffiekraal,Mankwe-Madikwe	GWQ problem
NW	DC37: Bojanala Platinum	NW375: Moses Kotane	Crocodile (West) and Marico	193	Madikwe & Pella Water Supply Strategy	No	High		Madikwe	
NW	DC37: Bojanala Platinum	NW375: Moses Kotane	Crocodile (West) and Marico	194	Magong Water Supply Scheme Strategy	Maybe	High		Magong	GWQ problem
NW	DC37: Bojanala Platinum	NW375: Moses Kotane	Crocodile (West) and Marico	195	Mankaipaya Water Supply Scheme Strategy	Maybe	Low		Mankaipaya	GWQ problem
NW	DC37: Bojanala Platinum	NW375: Moses Kotane	Crocodile (West) and Marico	196	Mmatau Water Supply Scheme Strategy	Maybe	Low		Mmatau	GWQ problem
NW	DC37: Bojanala Platinum	NW375: Moses Kotane	Crocodile (West) and Marico	197	Molatedi Bulk Water Supply Strategy	No	High		Molatedi	
NW	DC37: Bojanala Platinum	NW375: Moses Kotane	Crocodile (West) and Marico	30	Pella Strategy	No	Low		Pella	
NW	DC37: Bojanala Platinum	NW375: Moses Kotane	Crocodile (West) and Marico	198	Pitsediselung Water Supply Scheme Strategy	Maybe	Low		Pitsediselung	GWQ problem
NW	DC37: Bojanala Platinum	NW375: Moses Kotane	Crocodile (West) and Marico	199	Vaalkop Bulk Water Supply Strategy	Maybe	Medium		Vaalkop	Resolve institutional items - planning (DWA, WSAs, Water Boards), regional water supply problem; review & update strategy. Get input from Magalies Water. Water quality of Vaalkop Dam - to verify.
NW	DC38: Ngaka Modiri Molema	NW383: Mafikeng	Crocodile (West) and Marico	201	Madibe Western Community Base Supply Strategy	No	High		Madibe-Western	
NW	DC38: Ngaka Modiri Molema	NW383: Mafikeng	Crocodile (West) and Marico	202	Mafikeng Urban Strategy	Yes	Medium to high	yes	Mafikeng	Everyone agreed that this strategy should remain a priority. Update strategy to show that RBIG is at advanced stage of design of an upgrade to the WTW to 20 Ml/d.
NW	DC38: Ngaka Modiri Molema	NW383: Mafikeng	Crocodile (West) and Marico	203	Miga-North Community Base Supply Strategy	No	High		MigaNorth	
NW	DC38: Ngaka Modiri Molema	NW383: Mafikeng	Crocodile (West) and Marico	204	Wondermere-sturry Community Base Supply Strategy	No	Low		Wondermere	
NW	DC38: Ngaka Modiri Molema	NW384: Ditsobotla	Crocodile (West) and Marico	209	Matikiring & Carlisonia Cluster Strategy	No	Low		Matikiring	

Prov	DM Code and Name	LM Code and Name	WMA Name	AT Rpt ID No.	Report Name	SSC Priority	Deficit	5 Strategic Areas	Cluster	Comments
NW	DC38: Ngaka Modiri Molema	NW384: Ditsobotla	Crocodile (West) and Marico	210	Shiela Water Supply Scheme Strategy	No	Low		Shiela	
NW	DC38: Ngaka Modiri Molema	NW385: Ramotshere Moiloa	Crocodile (West) and Marico	211	Braklaagte and Leeufontein Strategy	No	Low		Braklaagte, Leeufontein	
NW	DC38: Ngaka Modiri Molema	NW385: Ramotshere Moiloa	Crocodile (West) and Marico	212	Dinokana Strategy	Yes	High		Dinokana	Everyone agreed that this strategy should remain a priority. Engineers appointed to formalise informal connections. Reports that aquifer levels are dropping
NW	DC38: Ngaka Modiri Molema	NW385: Ramotshere Moiloa	Crocodile (West) and Marico	34	Khunotswane Strategy	No	High		Khunotswane	
NW	DC38: Ngaka Modiri Molema	NW385: Ramotshere Moiloa	Crocodile (West) and Marico	35	Madutle Strategy	No	High		Madutle	
NW	DC38: Ngaka Modiri Molema	NW385: Ramotshere Moiloa	Crocodile (West) and Marico	213	Molatedi-Gabarone WS Strategy	No	Low		Kopfontein, Molatedi/Gabarone	
NW	DC38: Ngaka Modiri Molema	NW385: Ramotshere Moiloa	Crocodile (West) and Marico	214	Mosweu Strategy	No	Low		Mosweu	
NW	DC38: Ngaka Modiri Molema	NW385: Ramotshere Moiloa	Crocodile (West) and Marico	36	Motswedi-Gopane Strategy	Yes	Medium		Motswedi-Gopane	It was suggested that this be considered a priority as well - apparently already water supply issues at the moment as ground water resources seem to be "drying up". Water supply from boreholes not reaching high-lying areas. Study team to obtain test information from boreholes drilled in the area and re-evaluate the water balance.
NW	DC38: Ngaka Modiri Molema	NW385: Ramotshere Moiloa	Crocodile (West) and Marico	215	Ngotwane Strategy	No	Low		Ngotwane	
NW	DC38: Ngaka Modiri Molema	NW385: Ramotshere Moiloa	Crocodile (West) and Marico	37	Reboile Strategy	No	Low		Reboile	
NW	DC38: Ngaka Modiri Molema	NW385: Ramotshere Moiloa	Crocodile (West) and Marico	216	Supingstadt Strategy	Yes	Medium to high		Supingstadt	Water shortages reported - review water balance components and other information that may make this strategy a priority.
NW	DC38: Ngaka Modiri Molema	NW385: Ramotshere Moiloa	Crocodile (West) and Marico	217	Witleigat - Lehurst RWS Strategy	No	High		Witleigat/Lehurst	
NW	DC38: Ngaka Modiri Molema	NW385: Ramotshere Moiloa	Crocodile (West) and Marico	38	Zeerust Strategy	Maybe	Medium		Zeerust	It was suggested that this be considered a priority as well due to the potential development of 3000 new erven soon. Consider whether these 3000 new erven will be occupied by people from existing erven.

* Note that some strategies include more than one water supply scheme in the report - based on a supply area using the same water resource

** The allocation of priorities is based on the water balance, strategic importance and water source quality

SSC Workshop Priority Allocation - DWA Northern Planning Region				
Province	Maybe	No	Yes	Grand Total
GT	1	7	0	8
LP	12	112	30	154
MP	0	18	6	24
NW	14	23	6	43
Grand Total	27	160	42	229